

ULISS

Prerequisites and Installation guide



Dear user,

Thank you for choosing this SRA Instruments product.

This manual contains all the necessary information for the correct use of your software. Should you need further information or if you encounter any problems, please contact our After Sales Service:

Hotline: +33 (0)4 78 44 22 09
E-mail : service@sra-instruments.com


 <p>SRA INSTRUMENTS ANALYTICAL SOLUTIONS</p>	<p>SRA Instruments 210 rue des Sources 69280 Marcy l'Etoile FRANCE</p>	<p>Tel : +33 (0)4 78 44 29 47 info@sra-instruments.com www.srainstruments.com</p>
--	--	---

Table of contents

1. PREREQUISITES	4
1.1 Type of connection to the computer	4
1.2 Computer	4
2. CHECK YOUR COMPUTER CONFIGURATION	4
2.1 Remove the stand-by modes	4
2.1.1 Remove the stand-by mode of the USB ports	4
2.1.2 Remove the stand-by mode of the hard disk	5
2.1.3 Disable power management for the network adapter	6
3. INSTALLATION OF ULISS SOFTWARE	7
4. FIREWALL SETTINGS	10
5. ADMINISTRATOR AUTHORIZATION ON ULISS DIRECTORY	10

1. Prerequisites

1.1 Type of connection to the computer

LAN	RS 485
1	2

* RS ports can be replaced by USB/RS converter(s)

1.2 Computer

OS	Processor speed		Memory	
	Minimum	Recommended	Minimum	Recommended
Windows 10/11	2 GHz (Core i3)	3 GHz (Core i5)	4 GB	8 GB

- For Windows 10, version 1903 and higher.

2. Check your computer configuration

ULISS can be installed on Windows 10 and 11.

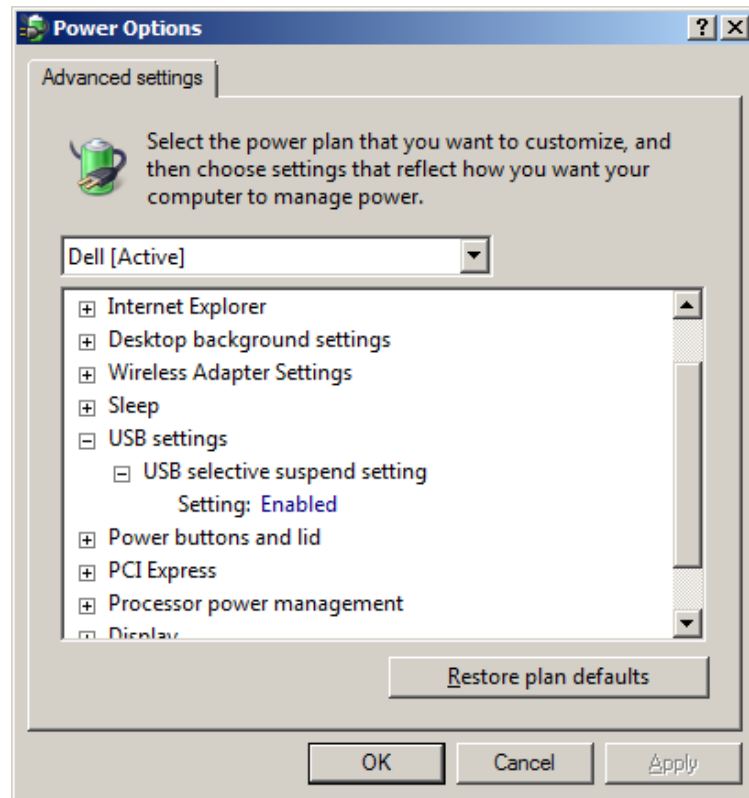
To successfully complete the installation, the computer must be started with **an administrator account with full write and modify rights**. The installation must be performed by a competent person who is sufficiently familiar with the Windows environment.

2.1 Remove the stand-by modes

If the stand-by modes of your computer, of the USB ports or of the hard disk are active, there is a risk that your analysis will be stopped if the stand-by mode occurs during its cycle. To avoid that, settings have to be done.

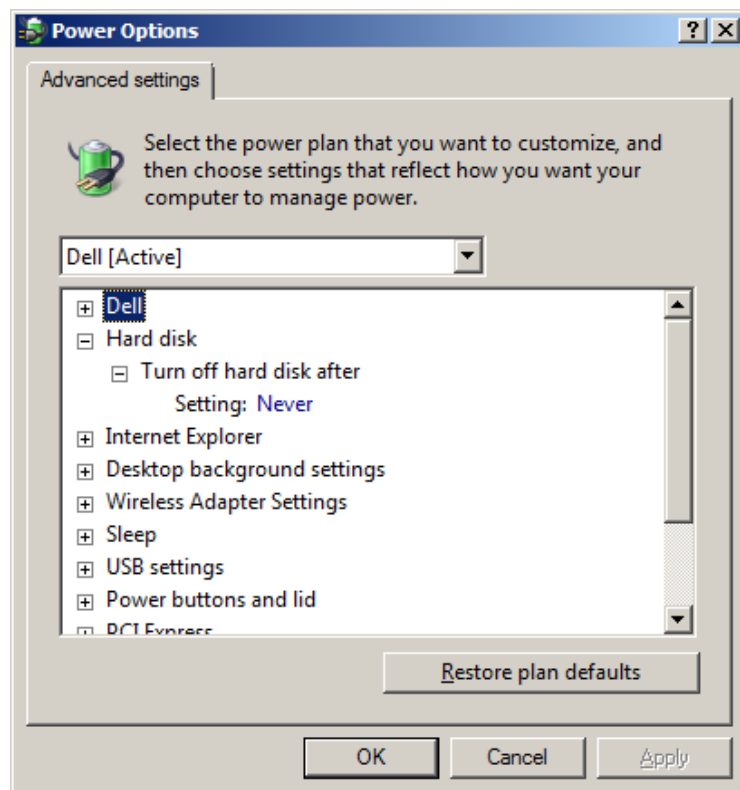
2.1.1 Remove the stand-by mode of the USB ports

From the Power Options window, expand the **USB Settings** tree. For the **USB selective suspend setting**, select the **Disabled** mode.



2.1.2 Remove the stand-by mode of the hard disk

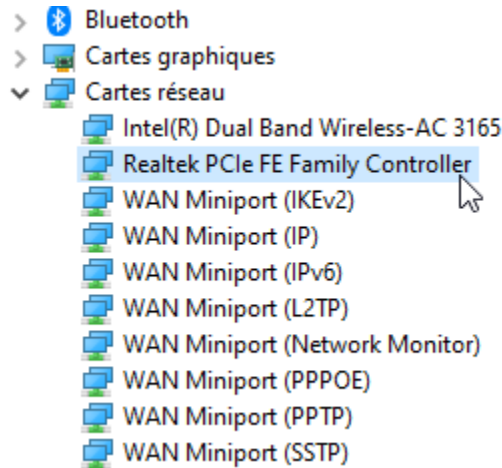
From the Power Options window, expand the **Hard Disk** tree. Make the same changes as before for the **Turn off hard disk after** setting.



2.1.3 Disable power management for the network adapter

Some of your network adapters may not have the **Power Management** tab available. In this case, you can skip this part.

Use **Device Manager** to change the power management settings for a network adapter.



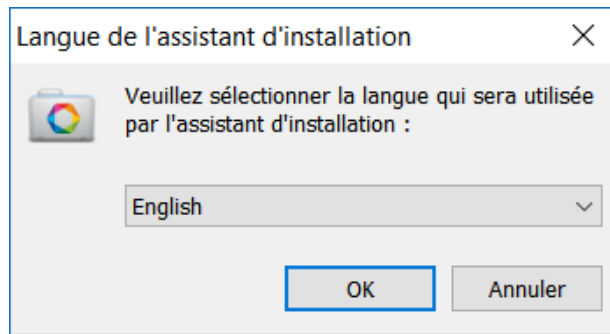
To disable all Power Management settings in Device Manager, expand **Network Adapters**, right-click the **adapter** > **Properties** > **Power Management**, and then clear the **Allow the computer to turn off this device to save power** check box.



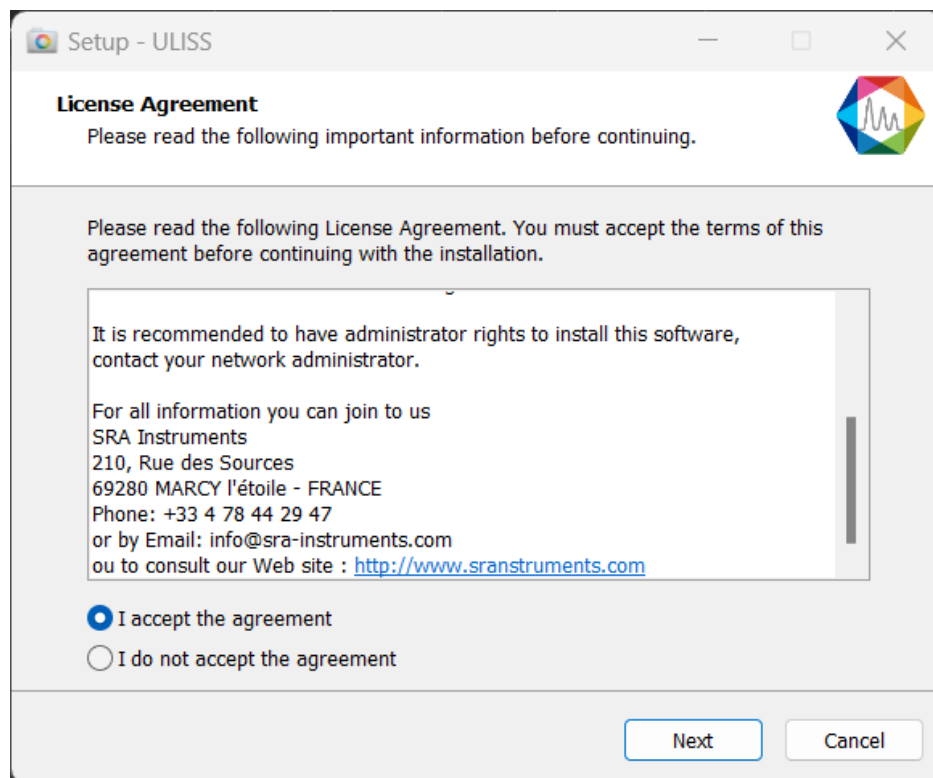
3. Installation of ULISS software

For the installation:

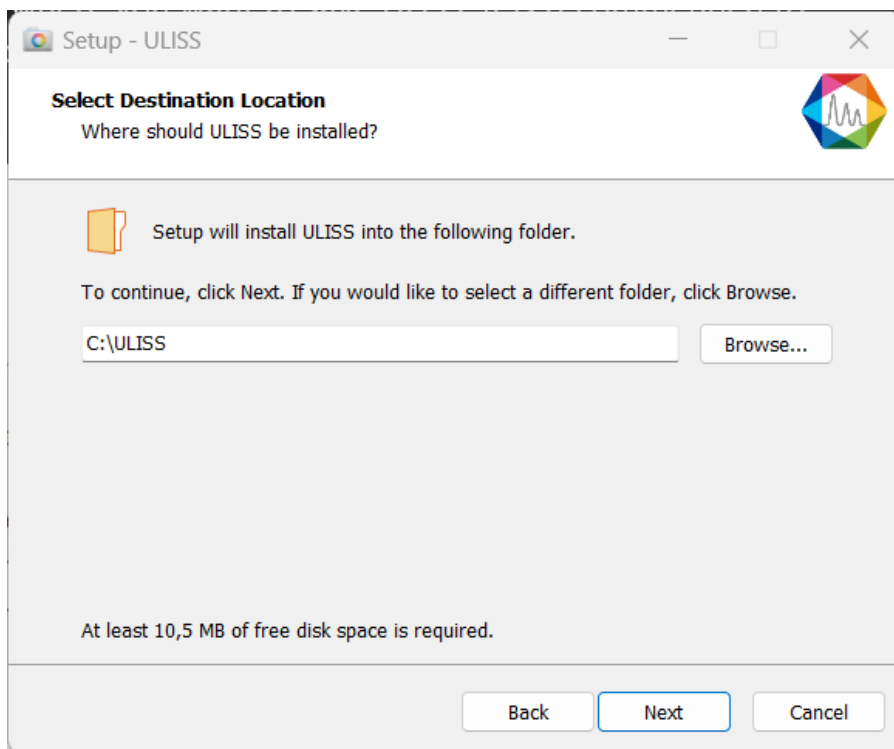
1. Select the setup.exe file with Windows explorer in the device provided for ULISS installation, right click, and select the sub-menu 'Run as administrator'.
2. Choose the language and click on Ok:



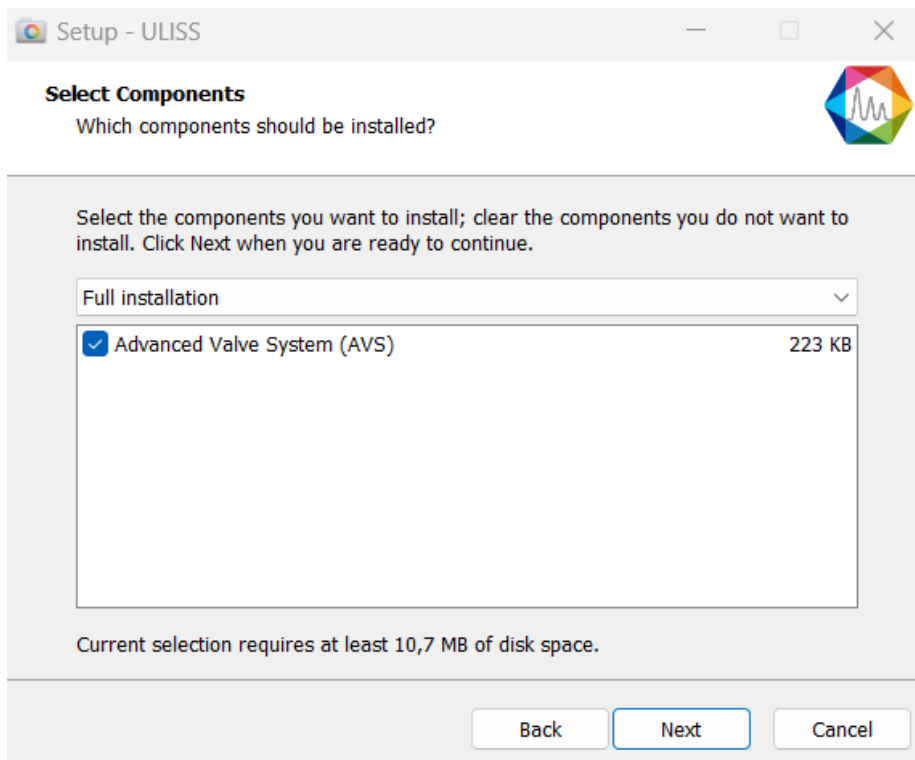
3. In the new window, select 'I accept the agreement' and click on Next:



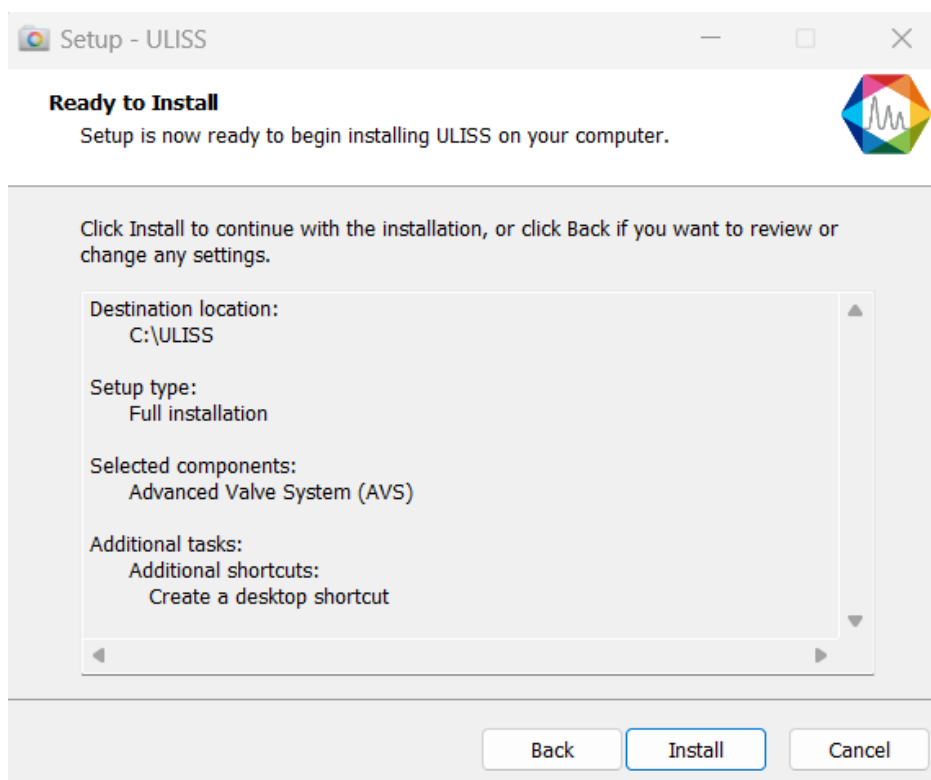
4. In the next window you will choose the folder where you want to save ULISS. It is recommended to keep the path C:\ULISS, but if you would like to place the software elsewhere, just click on 'Browse' and select the location. Then click on Next.



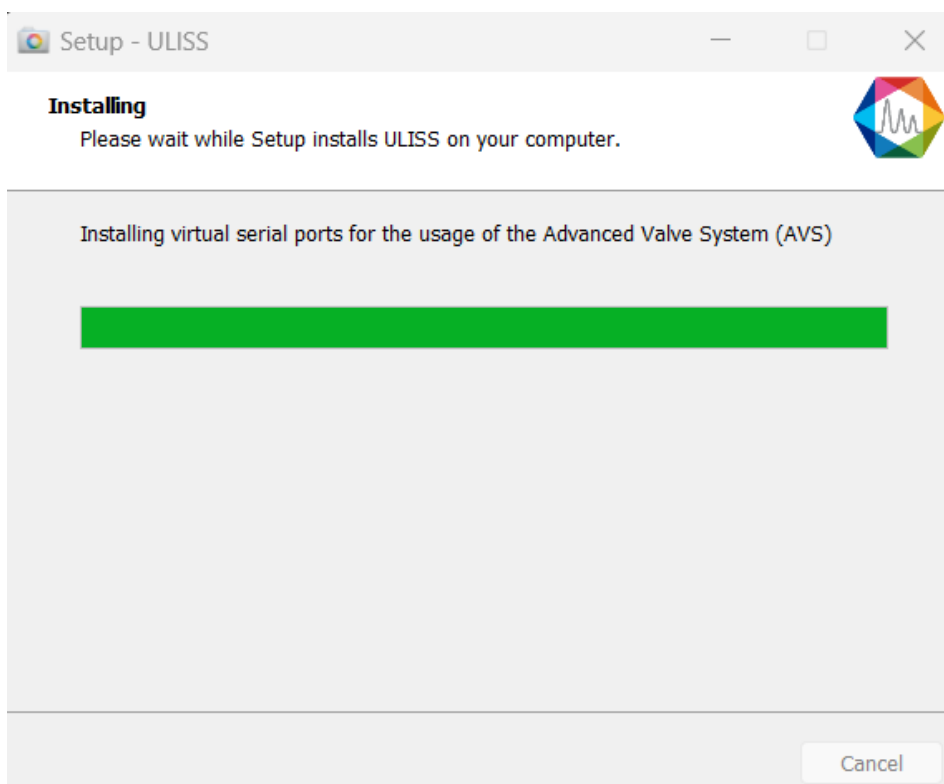
5. Choose if you want to create a shortcut on the desktop and click on Next:



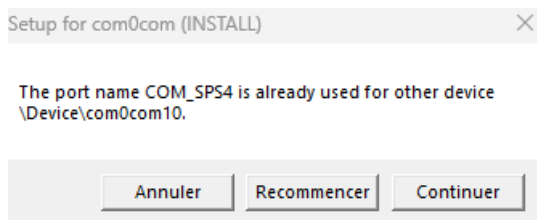
6. In the new window, click on Install:



7. Automatically stop the applications and click on Next (Note: this step is not systematic; it is only displayed if other applications are open on the PC).
8. ULISS installation is launched:



If the following error appears, click on "Continue". This only indicates that the virtual port used for the sampling valve has already been (correctly) installed.



4. Firewall settings

Following is a list of ports used by ULISS. These ports are required to be opened in order for the ULISS software applications to communicate.

The ports are programmed into the Windows Advanced Firewall for the active profile during installation.

Name	Port	Protocol
Communication with ICP Expert	8000	TCP
Authorize the ULISS.exe application		

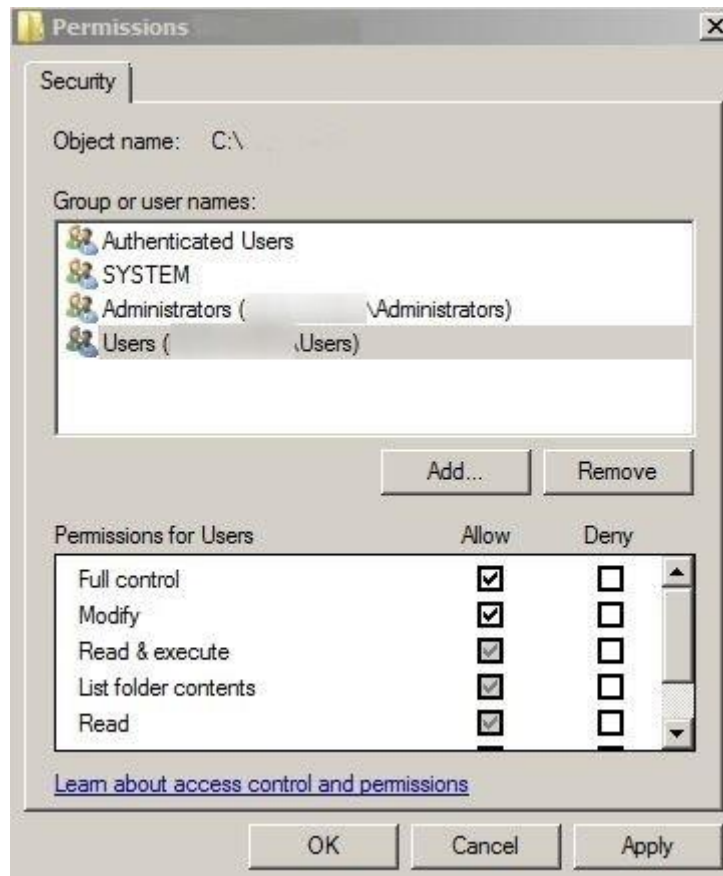
5. Administrator authorization on ULISS directory

For some uses, it is necessary to modify the administrator rights of certain directories.

1. Take administrator rights.
2. Right click on ULISS directory (by default: C:\ULISS) and click on the Properties menu.



3. In the Security tab, select the Authenticated Users group and click on the Edit button.



4. Select users.
5. Check the Full control box and validate by clicking on the Apply button.
6. Close the different windows with the Ok button.