

GERSTEL
certified **SUPPLIES**



Twister®



Twister® / Stir Bar Sorptive Extraction SBSE

The GERSTEL Twister® enables efficient, solvent-free extraction of organic compounds from aqueous matrices based on Stir Bar Sorptive Extraction (SBSE). The Twister may look like a conventional magnetic stirring rod, but while it stirs samples, such as water, beverages, body fluids or QuEChERS food extracts, it absorbs and concentrates organic compounds into its sorbent coating. A large number of samples can be extracted simultaneously using multi-position stir plates resulting in high productivity and throughput and often eliminating labor-intensive sample preparation steps. Analytes are typically desorbed from the Twister using thermal desorption. Liquid desorption using a solvent can be performed whenever the analytes are very high-boiling, thermally labile, or when they must be determined by HPLC. SBSE is up to 1000 x more sensitive than SPME since the stir bar has significantly more sorbent volume and the capacity to extract much larger sample volumes very efficiently. Due to its mechanical stability, the Twister can be reused up to 200 times depending on the sample matrix and desorption conditions, and can also be used for field sampling. The Twister is easy and convenient to use and inexpensive to ship to the laboratory for analysis.

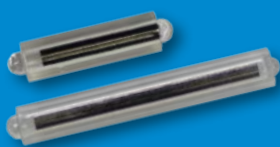



GC Analysis:

When the SBSE-step has been completed, the Twister is transferred to either a Thermal Desorption Unit (TDU) or a Thermal Desorption System (TDS). Thermal desorption and GC/MS determination of the concentrated organic compounds are then performed in one integrated system under integrated software control. Using the multi-desorption mode, multiple Twister desorptions can be performed for each GC/MS run resulting in even higher sensitivity and lower limits of detection.

LC Analysis:

Involatile, polar, or thermally labile compounds can be extracted from the Twister with a solvent using Twister Back Extraction (TBE) for subsequent determination by LC/MS. TBE and introduction to the LC/MS system is fully automated using the MultiPurpose Sampler.

	Standard PDMS Twister	EG/Silicone Twister
		
Phase	Polydimethylsiloxane (PDMS)	Polydimethylsiloxane (PDMS)/ Ethylene glycol (EG)-copolymer on an inert metal grid used for mechanical stabilization
Enrichment	Unspecific sorption of apolar compounds $\log(K_{ow}) > 4$. The polarity range can be extended by adding salt to the sample (salting out).	Unspecific sorption of apolar compounds and specific binding of polar hydrogen bond donors, such as phenols
Application examples	Pesticides, PAHs and other contaminants in water PAHs in seafood (QuEChERS) 2,4,6-TCA and other off-odors in wine and water Flavors and off-flavors in food and beverages	Flavor compounds in beverages Phenolic compounds

Order no.

GERSTEL Twister®

for Stir Bar Sorptive Extraction (SBSE)
with polydimethylsiloxane phase (PDMS)

film thickness 0.5 mm, length 10mm	
10 units	011222-001-00
100 units	011222-002-00

film thickness 1.0 mm, length 10mm	
10 units	011333-001-00
100 units	011333-002-00

film thickness 0.5 mm, length 20mm	
10 units	011444-001-00
100 units	011444-002-00

film thickness 1.0 mm, length 20mm	
10 units	011555-001-00
100 units	011555-002-00



GERSTEL Twister® kit

1 package (10 units)

consists of:

- film thickness 0.5 mm, 10 mm length (4 units)
- film thickness 1.0 mm, 10 mm length (2 units)
- film thickness 0.5 mm, 20 mm length (2 units)
- film thickness 1.0 mm, 20 mm length (2 units)

012370-000-00



GERSTEL Twister® EG-Silicone

for Stir Bar Sorptive Extraction (SBSE)
with Polydimethylsiloxane (PDMS)/ Ethylene
glycol (EG)-copolymer

32µL phase volume, 10 mm length

10 units	016904-001-00
----------	----------------------



**Book »New Concepts in Sorption-Based
Sample Preparation for Chromatography«**

by H.A. Baltussen, 241 pages

013745-000-00



Order no.

Twister® Headspace Sorptive Extraction (HSSE), analyte extraction and concentration from the vapor phase using the GERSTEL® Twister.

HSSE is a concentration technique that is much more sensitive than traditional static headspace analysis. A Twister is placed in an open adapter inside a closed headspace vial. The Twister is placed in the vapor phase above the sample such that analytes are extracted by, and concentrated into, the PDMS phase of the Twister. Sorptive extraction and concentration of organic compounds provides lower detection limits when combined with a GERSTEL TDS or TDU system for thermal desorption GC or GC/MS analysis.



TWISTER headspace vials 20 mL

1 package (100 units)

012491-000-00

Inserts for 20 mL Twister headspace vials 20 mL

1 package (100 units)

012492-000-00

Crimp caps with septum for vial

1 package (100 units)

Aluminium Headspace Crimp cap,
Septum: Silicone white/PTFE beige,
3.25mm, 35° shore A

011912-002-00



2



1

Crimp cap vials

	Type	mL	Seal size (mm)	unit	Part no.
1	clear	10	20	100	093640-005-00
	clear	10	20	1000	093640-069-00
2	clear	20	20	100	093640-006-00
	clear	20	20	1000	093640-068-00

Screw cap vials and Screw caps with septa

	Vials	mL	Thread Ø	unit	Part no.
1	Clear, Ø11.6 x 32 mm, for 20 mm Twisters	1.1	9	100	093640-045-00
2	Clear, Ø11.6 x 32 mm, for 10 mm Twisters	1.5	9	100	093640-046-00
3	Clear, blue screw caps, Septum: rubber red/PTFE	1.5	9	100	089355-085-00
4	PP blue, Septum: Silicone white/PTFE red, 1.0 mm, 55° shore A		9	100	093640-075-00



1



2



3



4

Order no.

Desorption tubes for TDU

The following desorption tubes are designed for the GERSTEL Twister Desorption Unit (TDU).
Dimensions: OD 6 mm (ID 4 mm), length 60 mm

straight with notch

For desorption of GERSTEL Twister® or for liquid injection of samples with involatile residue in combination with GERSTEL Microvials

10 units	013010-010-00
100 units	013010-100-00



Desorption tubes for use with TDS, TDS A2 or Tube Conditioner (TC)

empty tubes

for Twisters with film thickness up to 1 mm, 6 mm OD, 4.5 mm ID, 1 package (10 units)

012518-010-00



Tweezers

009999-025-00



Order no.



Twister® Back Extraction (TBE) kit for the MPS

Consists of:

- PDMS Twisters, film thickness 0.5 mm, length 10mm (10 units)
- 2 ml vials (100 units)
- magnetic screw caps (100 units)
- 200 µl inserts (100 units)
- Opening lock for agitator

Requires, but does not include:

GERSTEL MPS with agitator incl. 2 mL inserts and GERSTEL MAESTRO software

012195-099-00



TBE Supplies

GERSTEL Twister®

for Stir Bar Sorptive Extraction (SBSE) with polydimethylsiloxane phase (PDMS)

film thickness 0.5 mm, length 10mm

10 units	011222-001-00
100 units	011222-002-00

Screw cap vials



Vials	mL	Thread Ø	unit	Part no.
Clear, Ø11.6 x 32 mm, for 10 mm Twisters	1.5	9	100	093640-046-00

Microliter inserts for TBE



For 10 mm Twisters: Insert Ø 6 x 31 mm, clear, flat bottom	0.2		100	093640-047-00
---	-----	--	-----	----------------------

Screw caps with septa



UltraClean™, magnetic, golden Septum: Silicone white/PTFE red 1.0 mm	9		100	093640-079-00
---	---	--	-----	----------------------

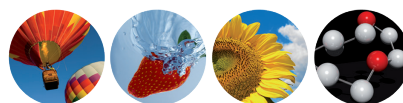


GERSTEL

GERSTEL GmbH & Co. KG

Eberhard-Gerstel-Platz 1
45473 Mülheim an der Ruhr
Germany

☎ +49 (0) 208 - 7 65 03-0
☎ +49 (0) 208 - 7 65 03 33
@ gerstel@gerstel.com
🌐 www.gerstel.com



SOLUTION

www.srainstruments.com
info@srainstruments.com

Via alla Castellana, 3
20063 Cernusco s/N | MI
Tel. 02 9214 3258
Fax 02 9247 0901



GERSTEL Worldwide

GERSTEL, Inc.

701 Digital Drive, Suite J
Linthicum, MD 21090
USA

☎ +1 (410) 247 5885
☎ +1 (410) 247 5887
@ sales@gerstelus.com
🌐 www.gerstelus.com

GERSTEL AG

Wassergrabe 27
CH-6210 Sursee
Switzerland

☎ +41 (41) 9 21 97 23
☎ +41 (41) 9 21 97 25
@ swiss@ch.gerstel.com
🌐 www.gerstel.ch

GERSTEL K.K.

1-3-1 Nakane, Meguro-ku
Tokyo 152-0031
SMBC Toritsudai Ekimae Bldg 4F
Japan

☎ +81 3 5731 5321
☎ +81 3 5731 5322
@ info@gerstel.co.jp
🌐 www.gerstel.co.jp

GERSTEL LLP

Level 25, North Tower
One Raffles Quay
Singapore 048583

☎ +65 6622 5486
☎ +65 6622 5999
@ SEA@gerstel.com
🌐 www.gerstel.com

GERSTEL Brasil

Av. Pascoal da Rocha Falcão, 367
04785-000 São Paulo - SP Brasil

☎ +55 (11)5665-8931
☎ +55 (11)5666-9084
@ gerstel-brasil@gerstel.com
🌐 www.gerstel.com.br

Information, descriptions and specifications in this Publication are subject to change without notice.

Ver. 2013/07/16

To download the latest version, please go to : www.gerstel.com/en/supplies.htm

GERSTEL, GRAPHPACK and TWISTER are registered trademark of GERSTEL GmbH & Co. KG

©Copyright by GERSTEL GmbH & Co.KG

Agilent is trademark of Agilent Technologies, Inc.; Carbotrap B and Carbotrap C are trademarks of Sigma-Aldrich Biotechnology L.P.; HP is trademark of Hewlett-Packard Development Company, L.P.; Kalrez® and Viton® are trademarks of Dupont Performance Elastomers; Teflon® is trademark of E. I. Du Pont de Nemours & Company; Tenax® TA is trademark of Buchem B.V.



Awarded for the active pursuit of environmental sustainability