

# Continuous Headspace Analysis Using SIFT-MS: A Powerful Probe of Dynamic Processes

Mark J. Perkins,<sup>1</sup> Vaughan S. Langford<sup>2</sup>

<sup>1</sup>Anatune Ltd, Girton Road, Cambridge, CB3 0NA, United Kingdom | <sup>2</sup>Syft Technologies Ltd, 3 Craft Place, Christchurch 8024, New Zealand

This application note introduces the continuous headspace analysis (CHA) technique, which revolutionizes investigation of dynamic processes. By applying direct analysis using selected ion flow tube mass spectrometry (SIFT-MS), continuous, real-time monitoring of volatile emissions from diverse industrial and consumer products is simple.

Emissions of volatile compounds are dynamic – depending on temperature, surface area, humidity, and so on. However, conventional volatile organic compound (VOC) analysis utilizes chromatographic methods, which by nature are slow. Chromatographic techniques are impractical probes of dynamic processes, because they require that multiple grab samples be taken, followed by prolonged preparation and analysis of each sample. SIFT-MS revolutionizes investigations of volatile emissions due to its direct, sensitive, and real-time analysis via soft chemical ionization (see [syft.com/SIFT-MS](http://syft.com/SIFT-MS)). When coupled with automation, samples can be run 24 hours/day, speeding up research and development or QA testing.

The data shown here were obtained using a Syft Technologies Voice200Ultra SIFT-MS instrument integrated with a GERSTEL Multipurpose Sampler (MPS) (GERSTEL, Mülheim an der Ruhr, Germany) equipped with a GERSTEL purge tool. Samples were analyzed in 20-mL sample vials.

**Emissions from polymers.** Figure 1 shows replicate analyses of 22-mg samples of polyoxymethylene (POM) polymer pellets at 60 °C over a 20-minute period with 2.7-second time resolution. Under dry purge conditions (zero air), formaldehyde concentrations demonstrate the expected decay. However, prior addition of water (2  $\mu$ L) to the sample results in new

structure (dotted curve in Figure 2). Since the area under the formaldehyde curves are very similar, the same amount of formaldehyde is being released in each sample. Addition of water hydrates the emitted formaldehyde, which then condenses on the vial walls for a short period before being released in a burst, producing the observed (and repeatable) spike in concentration at 3.25 minutes.

**Fragrance release from consumer products.** Figure 2 shows an example where CHA was used to probe room-temperature release of fragrance compounds every 13 seconds from 50 mg of muscle rub over a four-hour period. Samples were purged continuously with dry zero air at a flow rate of 25 mL/min. For this popular consumer brand, dramatic changes in fragrance composition occur over time. Using these insights, the product development process is enhanced through previously unavailable quantitative data.

SIFT-MS provides highly sensitive, selective, and non-discriminatory CHA. Applications of CHA include analyzing volatile emissions from polymers and packaging, long-term fragrance or aroma changes, analyzing absorption of VOCs by “scrubbing” materials, and monitoring the progress of reactions in chemical processes.

Figure 1. CHA-SIFT-MS of formaldehyde from POM polymer under dry (solid traces) and wet (dotted trace) conditions.

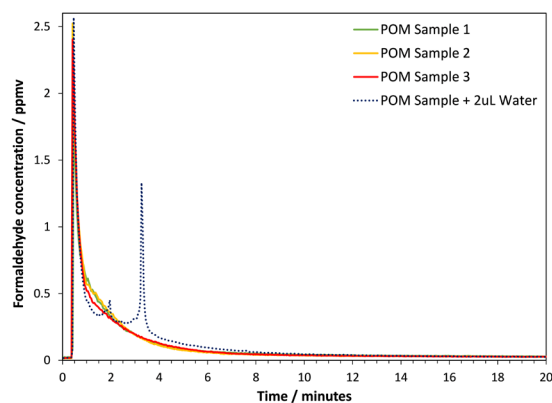


Figure 2. CHA-SIFT-MS of fragrance components as they are slowly released from a popular brand of muscle rub.

