

METHANTHIOL FAST ANALYSIS

Technique : Micro-GC

Column : PoraPlot U

Carrier gas : Hydrogen

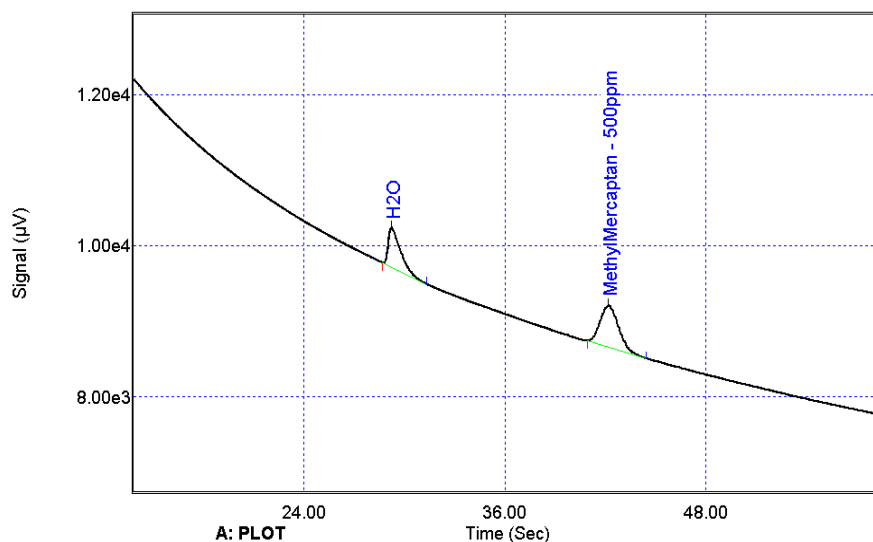
Injector : 90°C, variable volume

Column temperature : 90°C

Injection time : 100 ms

Column pressure : 30 psi

μTCD sensitivity : Standard



The Micro-GC is a powerful solution that provides fast, accurate and easy-to-use solution to analyze your gas sample.

A wide range of capillary columns and MEMS injectors are available to optimize channel combinations inside the Micro-GC to obtain the desired separation. The μTCD is the high-performance universal detector used in such systems. A parallel analytical configuration of the channels or analytical modules will allow the sampling of a small amount of gas sample and simultaneous injection in all channels to develop up to 4 chromatograms and one cumulative report.

SRA Instruments is the ideal Partner with specific competences to develop with you turn key solutions based on optimized Micro-GC, accessories and dedicated software utility or report calculations for specific plant context.

Some examples of applications are:
gas coke analysis,
biogas, syngas,
refinery and fuel gas,
natural gas, fuel cells.



More information : www.sra-instruments.com