

THT IN NATURAL GAS

Technique : Micro-GC / MS

Column : Stabilwax

Carrier gas : Helium

Column temperature : 90°C

Column pressure : 20 psi

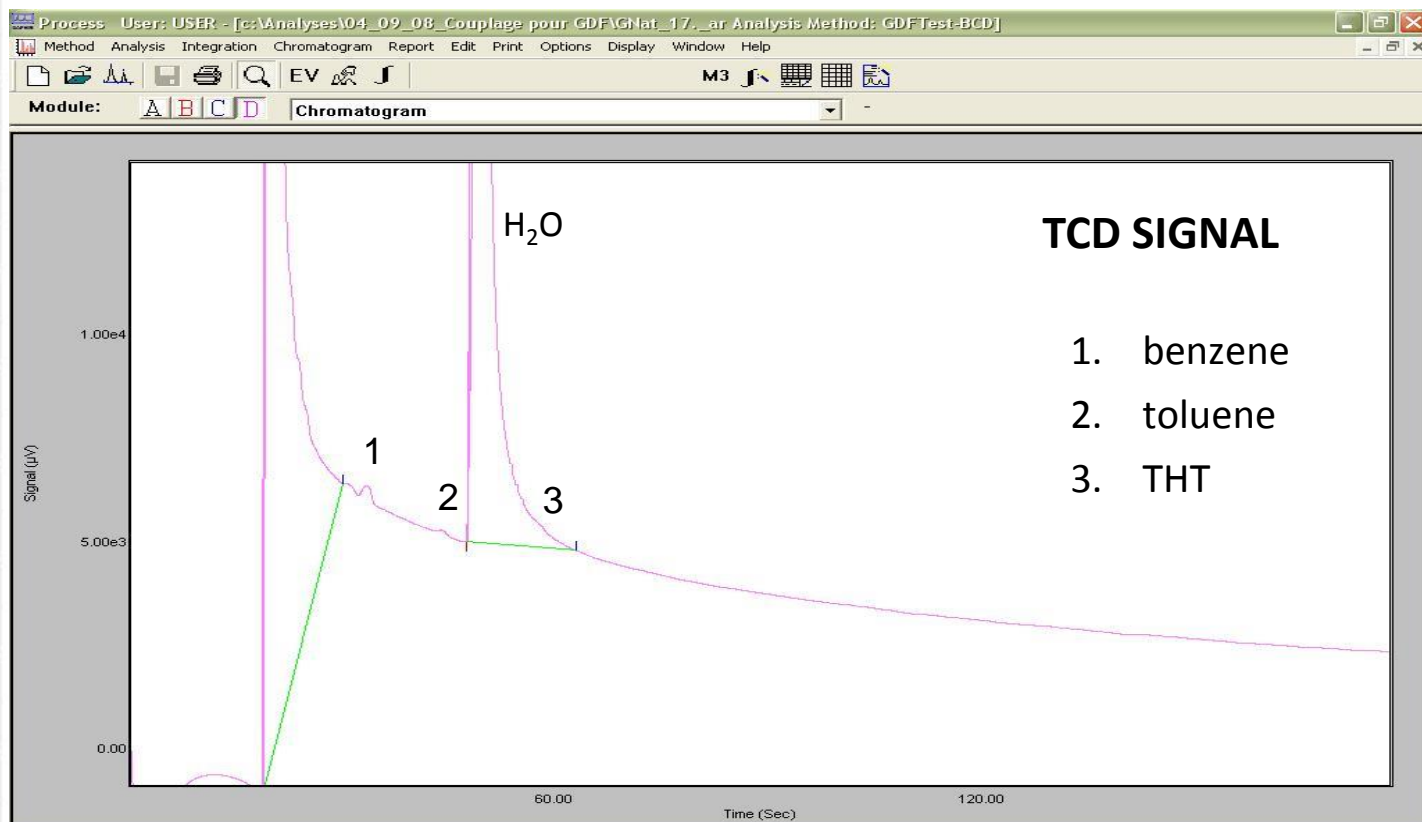
Interface temperature : 160°C

Injector temperature : 60°C

Injection time : 200 ms

TCD sensitivity : High

MSD : SIM mode (m/z 45, 60, 88)



THT IN NATURAL GAS

