

SOPRANE I

Installation guide



SRA INSTRUMENTS
210 rue des Sources
69280 Marcy l'Etoile
FRANCE

T : 04.78.44.29.47
F : 04.78.44.29.62
info@sra-instruments.com
www.sra-instruments.com

SA à Directoire et Conseil de
surveillance au capital de 150.000 €
RCS Lyon B 342 068 731
APE 4669B
SIRET: 342 068 731 00054
Code TVA FR 40342068731



Table of contents

1. CHECK YOUR COMPUTER CONFIGURATION	3
1.1 Set the Administrator mode	3
1.2 Remove the alert messages on screen	3
1.3 Remove the stand-by modes	4
1.3.1 Remove the stand-by mode on your computer	4
1.3.2 Remove the stand-by mode of the USB ports	5
1.3.3 Remove the stand-by mode of the hard disk	7
2. SOPRANE INSTALLATION	9
2.1 Software installation	9
2.2 Drivers installation	14
3. COMPUTER CONFIGURATION FOR NETWORKING	19
3.1 Administrator authorization on Soprane directory	19
3.2 Administrator authorization on the user ProgramData directory	20
3.3 Administrator authorization on the Soprane registry key	21



1. Check your computer configuration

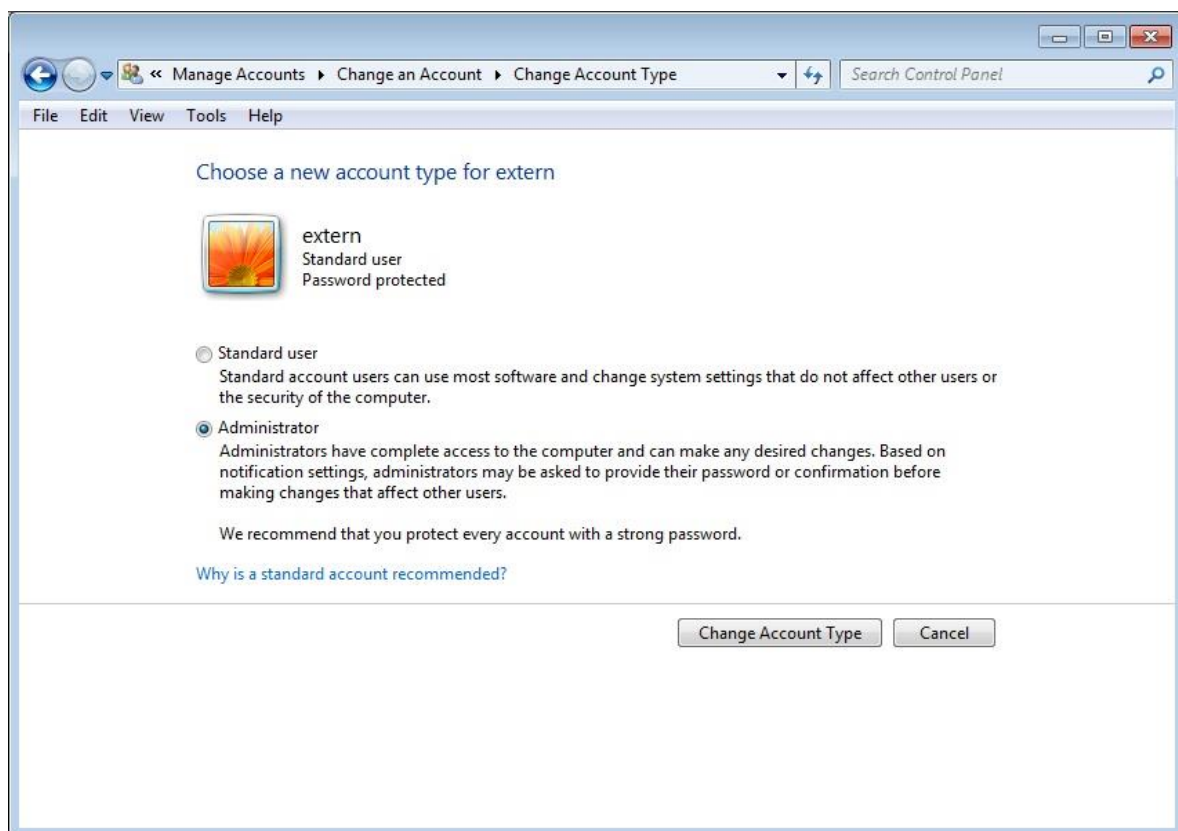
Soprane can be installed on Windows XP, Seven, 8 or 10.

In order to carry out a successfully installation, some important conditions must be set-up.

1.1 Set the Administrator mode

1. Click on 'Start' and select 'Control Panel'.
2. In the window displayed, select 'User Accounts'.
3. Click on 'Manage users accounts'.
4. Select the user. The user must be administrator to perform the installation. If it is not the case, click on 'Properties' and in the tab concerning the belonging group select 'Administrator' and click on 'Apply'.

On Windows Seven, when you have selected 'Users Accounts', click on 'Change the account type', then select 'Administrator' and click on 'Change Account Type'.



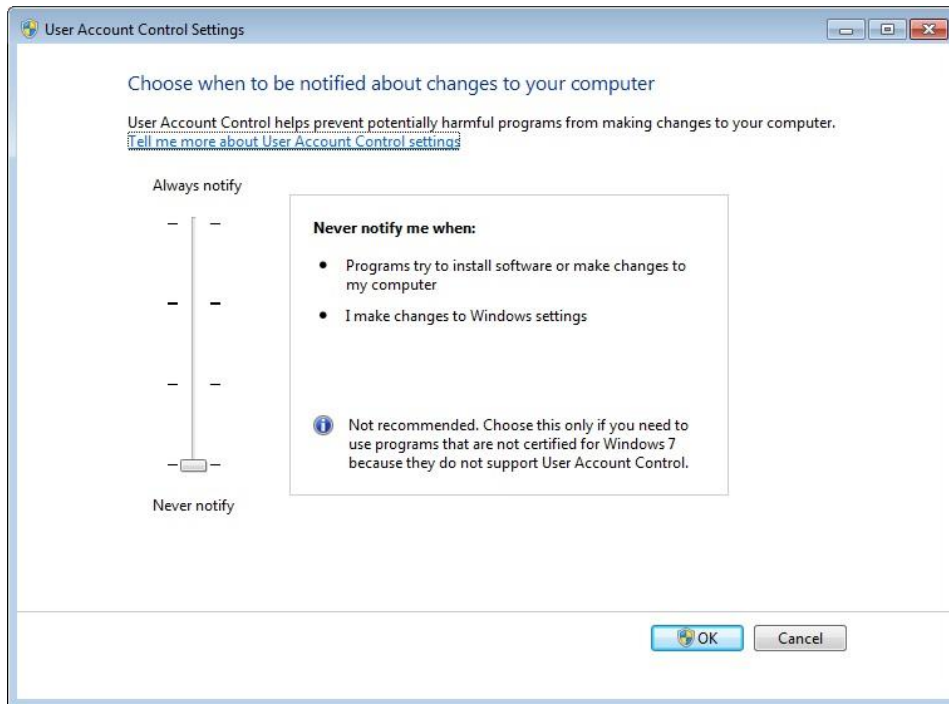
1.2 Remove the alert messages on screen

In order to avoid receiving alert messages on your computer, for example each time you want to launch an analysis, it is important to select 'Never notify'.

1. Click on 'Start' and select 'Control Panel'.
2. In the window displayed, select 'User Accounts'.



3. Click then on 'Change User Account Control Settings' ; the following window is displayed:



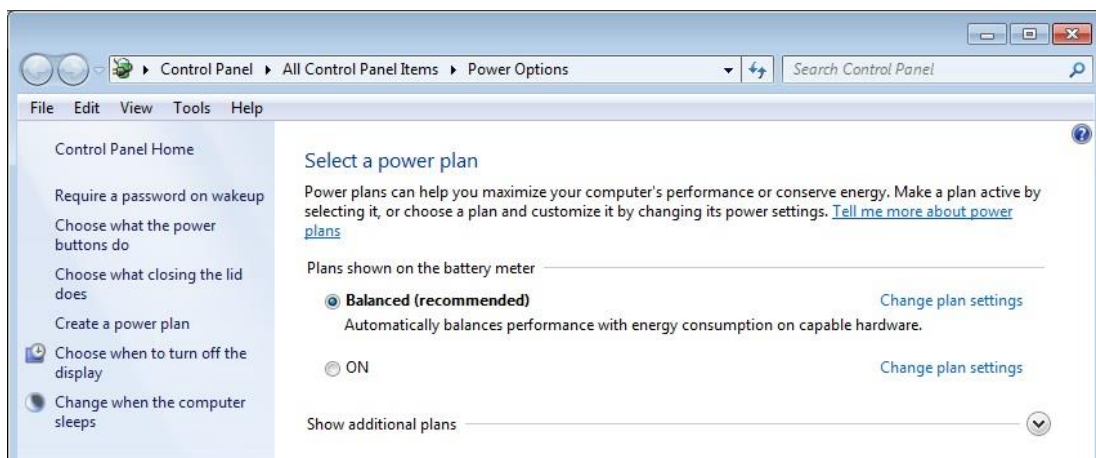
4. Place the cursor at the bottom 'Never notify'.

1.3 Remove the stand-by modes

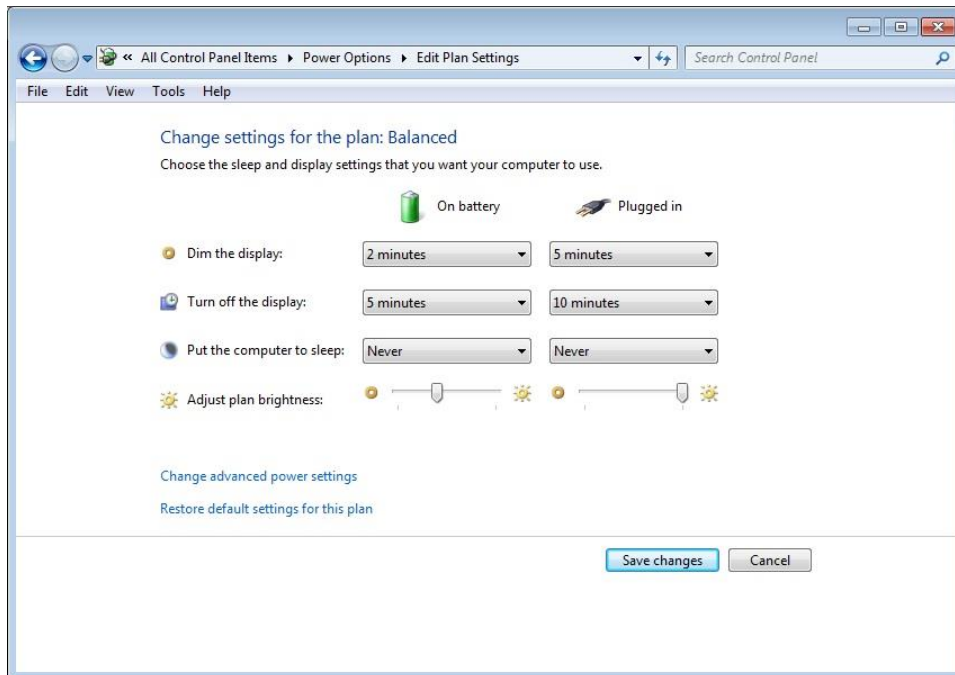
If the stand-by modes of your computer, of the USB ports or of the hard disk are active, there is a risk that your analysis will be stopped if the stand-by mode occurs during its cycle. To avoid that, settings have to be done.

1.3.1 Remove the stand-by mode on your computer

1. Click on 'Start' and select 'Control Panel'.
2. Click on 'Power Options'. The window below appears:



3. By default Balanced is selected. Click on 'Change plan settings'.
The window below appears:

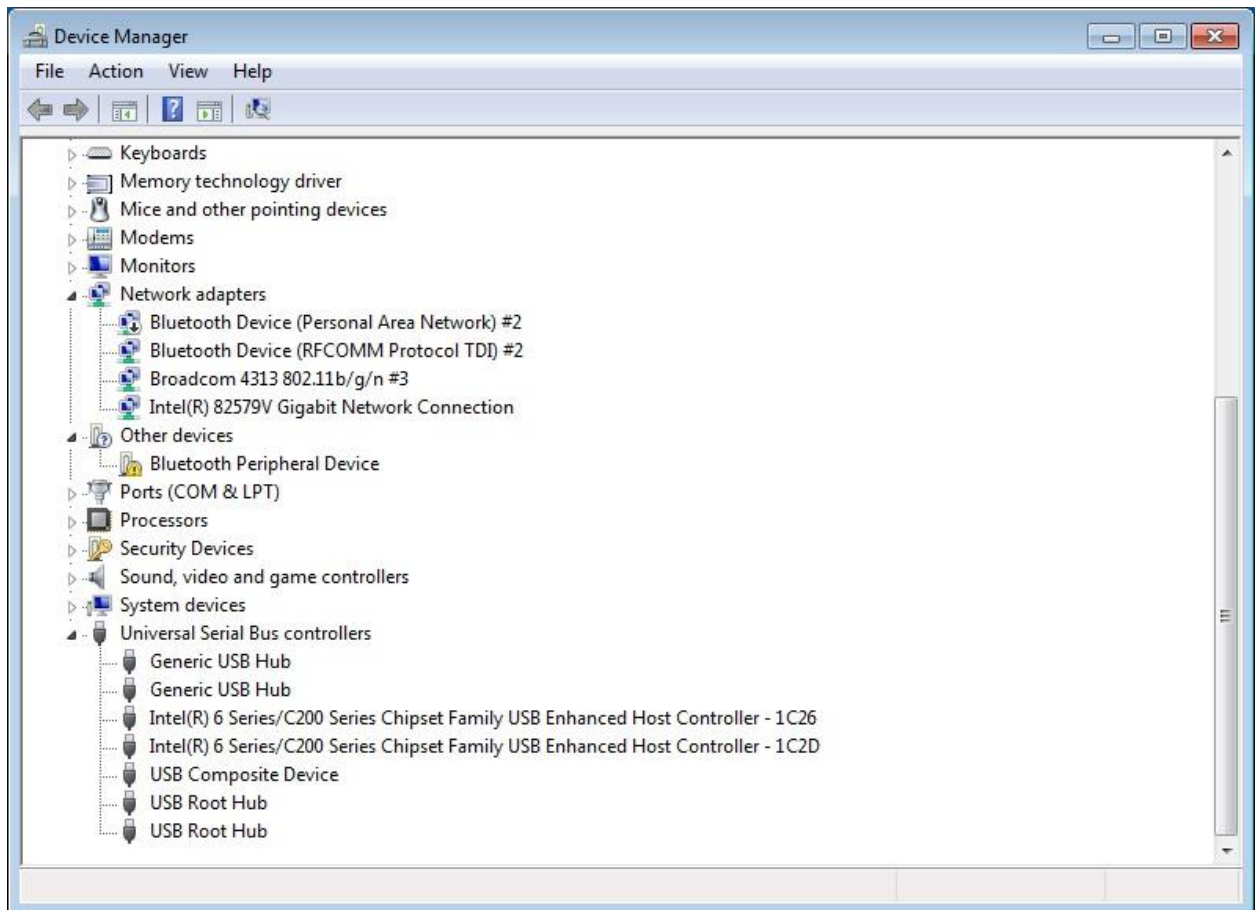


4. In front of 'Put the computer to sleep', check that the option 'Never' is enabled. If it is not the case, select it.

1.3.2 Remove the stand-by mode of the USB ports

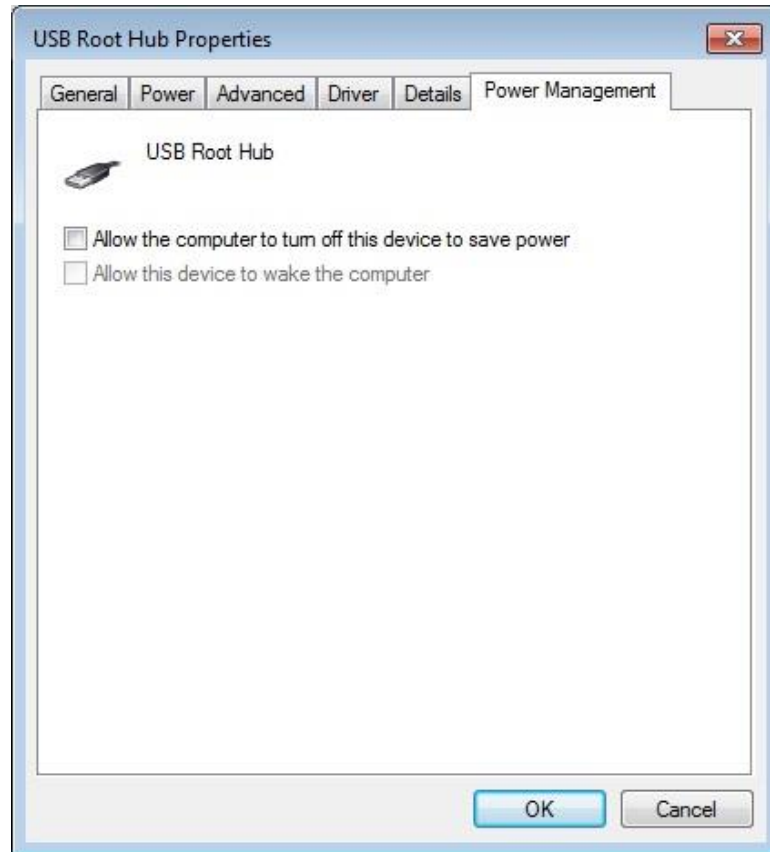
1. Click on 'Start' and select 'Control Panel'.
2. In the window displayed, select 'Device Manager'.
3. In the new window, click on 'Universal Serial Bus controllers' so that the screen displays:





4. Select the USB concerned (or all if needed) and double-click.
5. In the window displayed, select the tab 'Power Management' and uncheck the box as shown below:



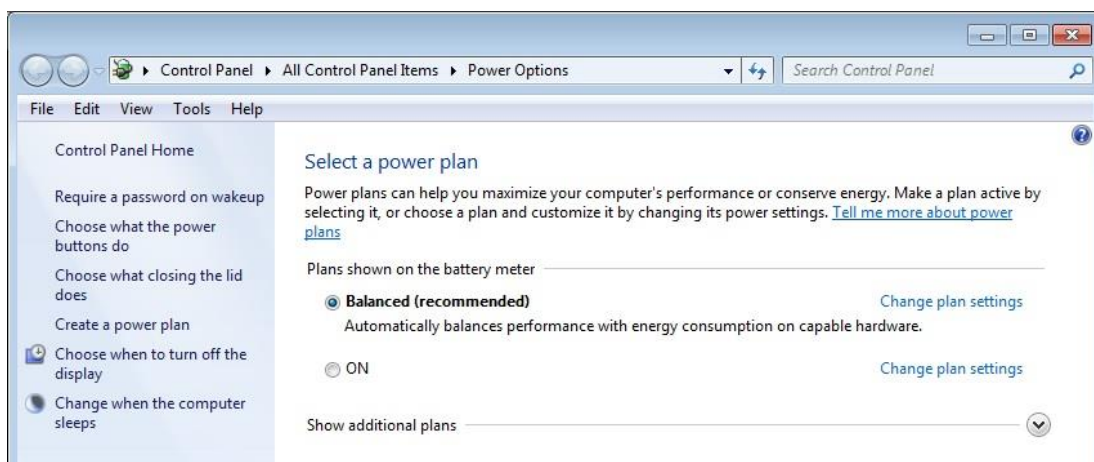


6. Click on Ok.

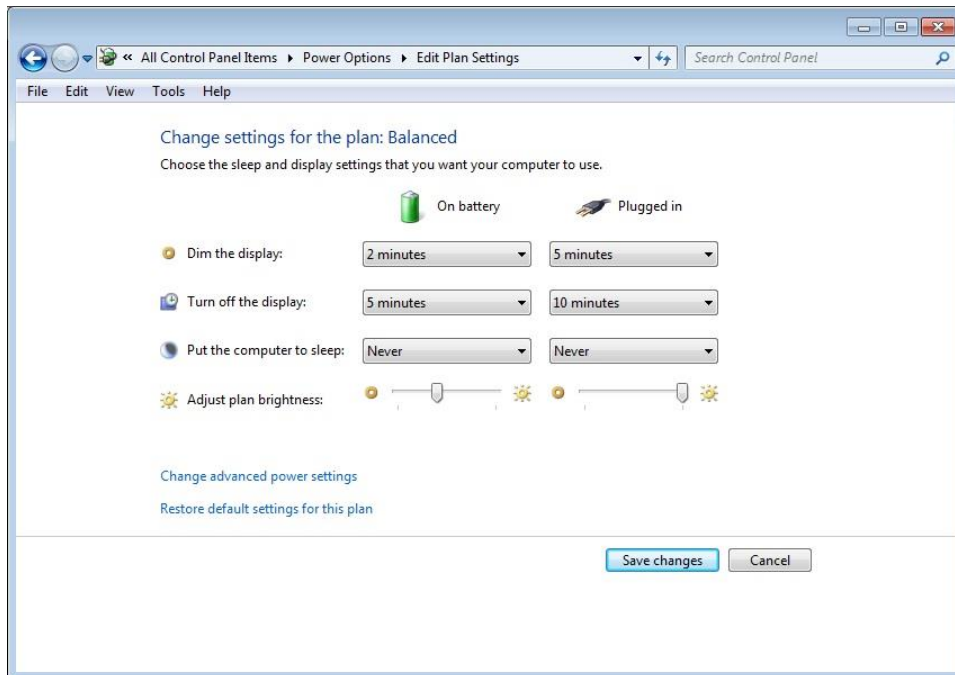
1.3.3 Remove the stand-by mode of the hard disk

1. Click on 'Start' and select 'Control Panel'.
2. Click on 'Power Options'.

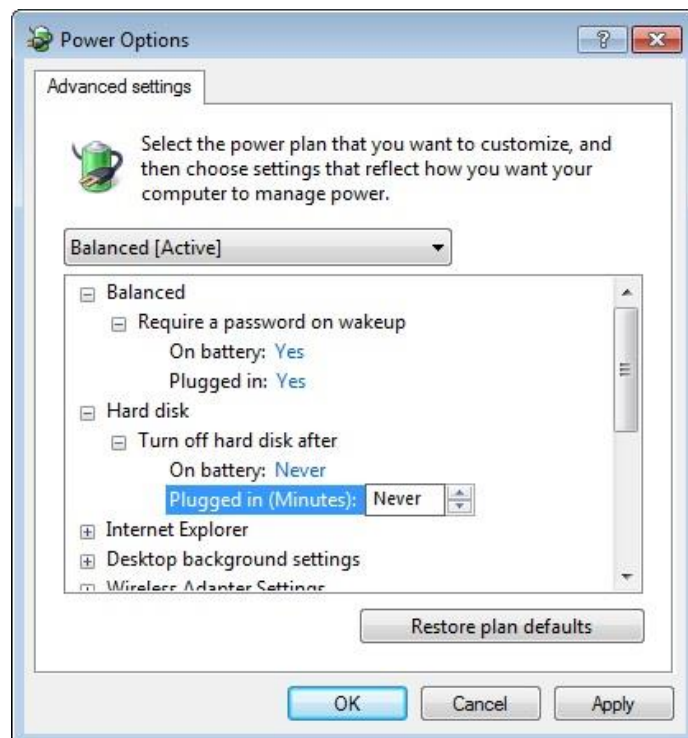
The window below appears:



- By default Balanced is selected. Click on 'Change plan settings'. The window below appears:



- Click on 'Change advanced power settings'.
- Click in front of 'Hard disk'.
- Click in front of 'Turn off hard disk after'. The window below appears:



- Check that 'Never' is selected otherwise set it.



2. Soprane installation

2.1 Software installation

First of all, make sure that the Soprane key is not connected to your computer.

For the installation:

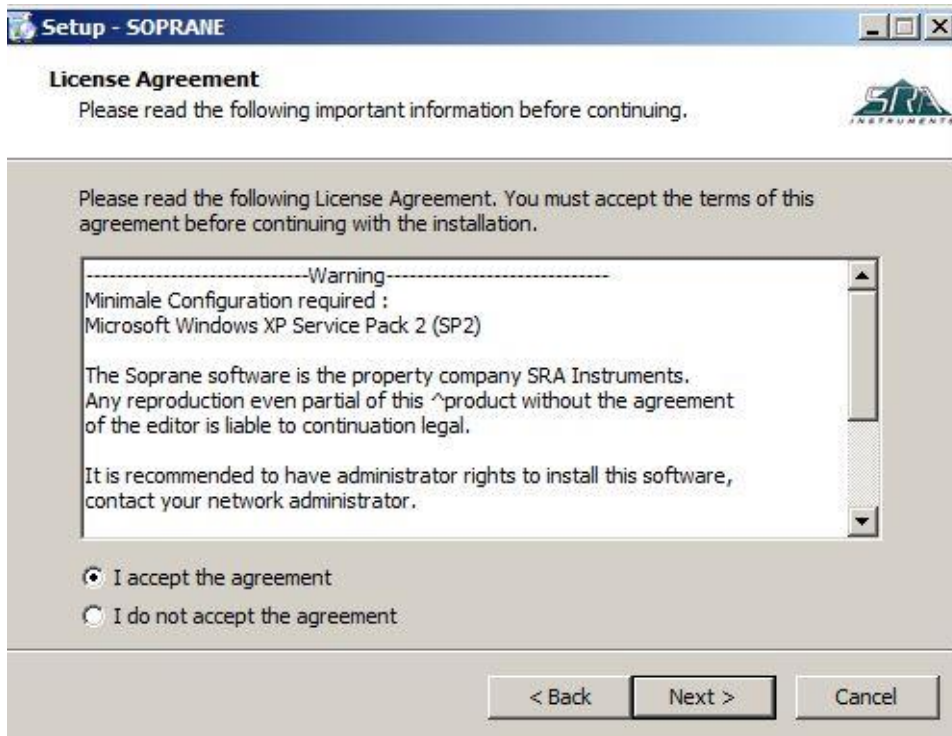
1. Select the setup.exe file with Windows explorer in the device provided for Soprane installation, right click and select the sub-menu 'Run as administrator'.
2. Choose the language and click on Ok :



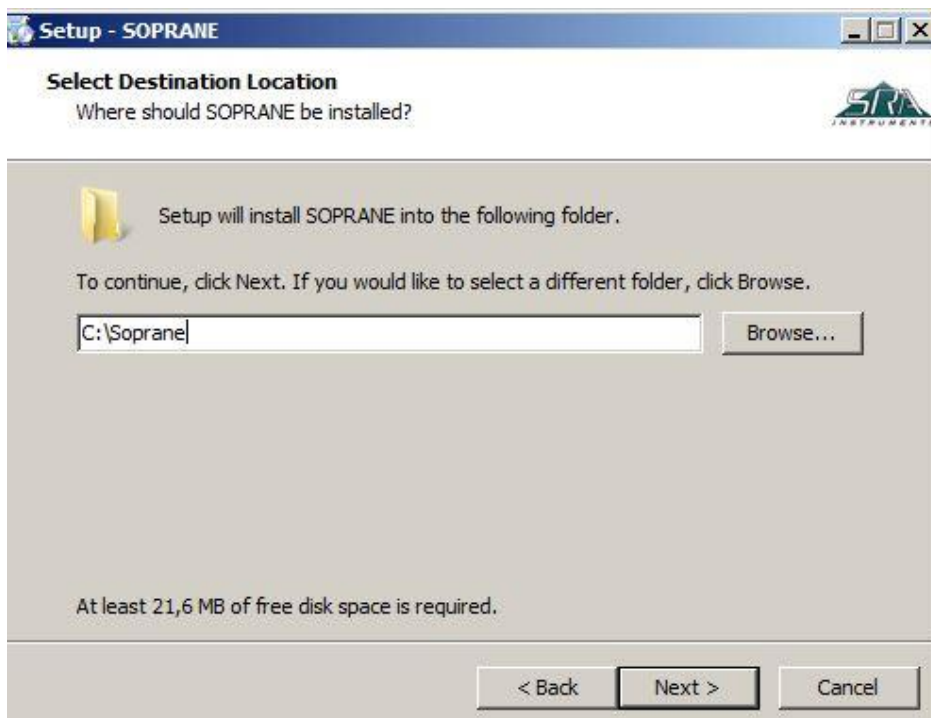
3. In the window displayed, click on Next :



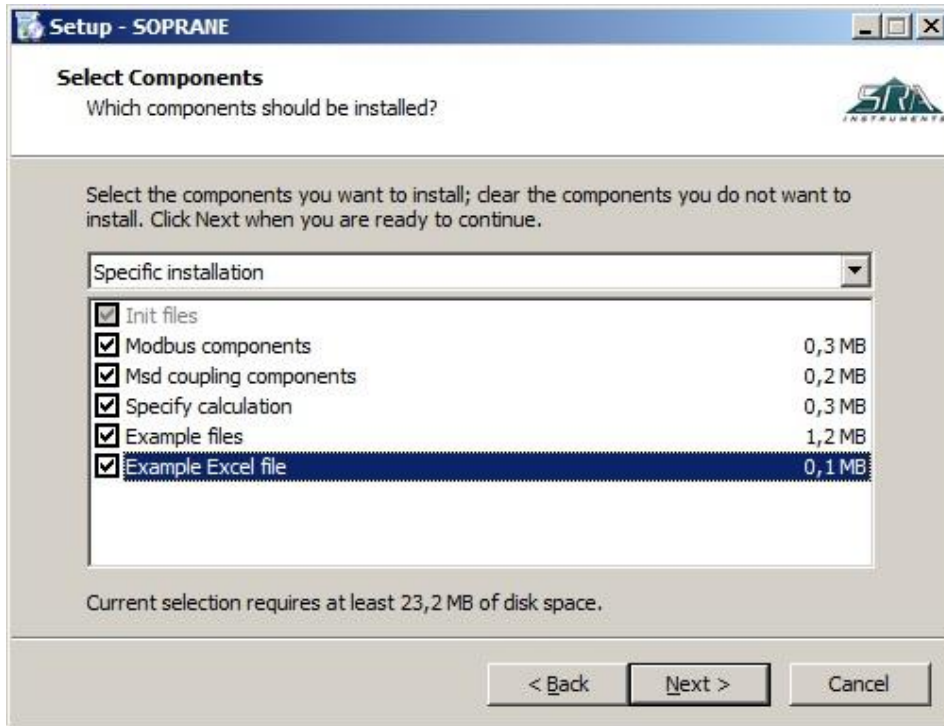
4. In the new window, select 'I accept the agreement' and click on Next :



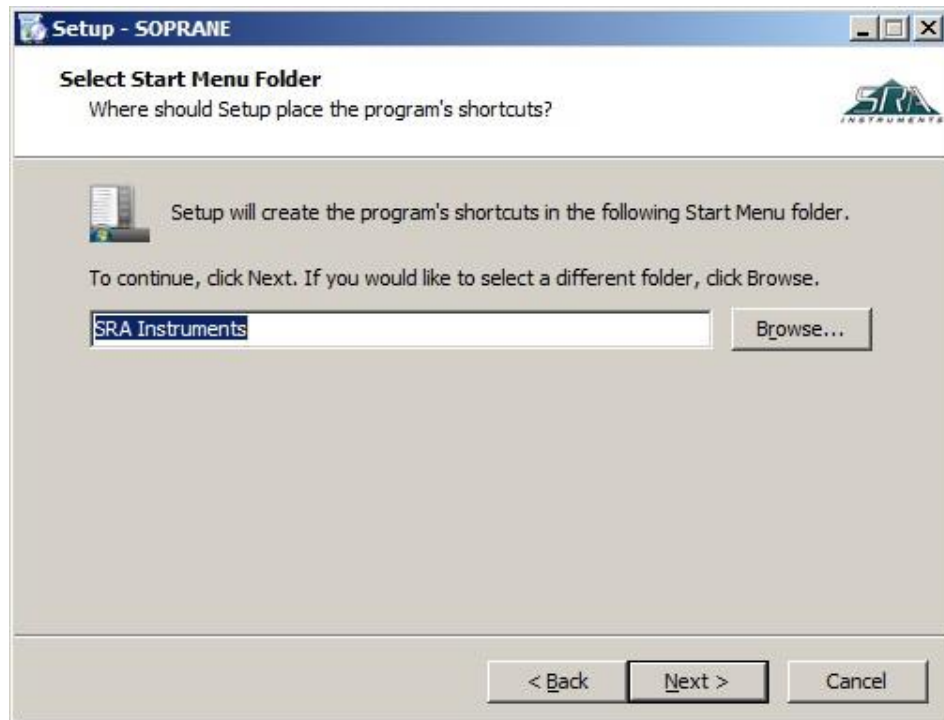
5. In the next window you will choose the folder where you want to save Soprane. It is recommended to keep the path C:\Soprane, but if you would like to place the software elsewhere, just click on 'Browse' and select the location. Then click on Next.



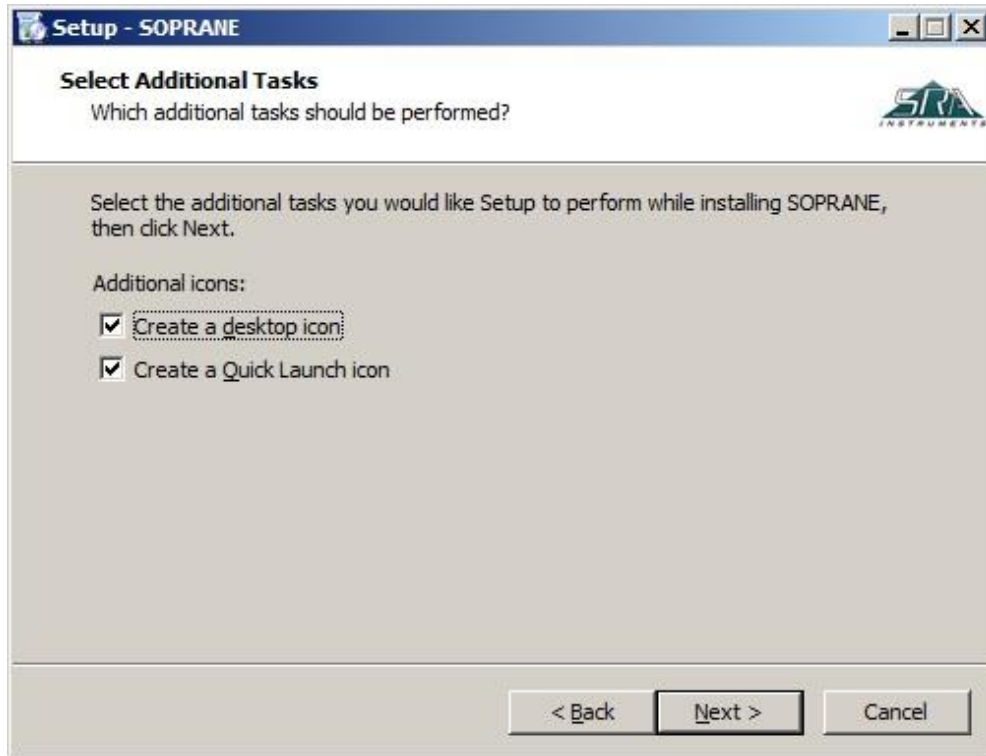
6. Select the components to install and click on Next.
If you don't know which to choose, select them all as shown below. (The Soprane key will unlock only the components required for the customer application).



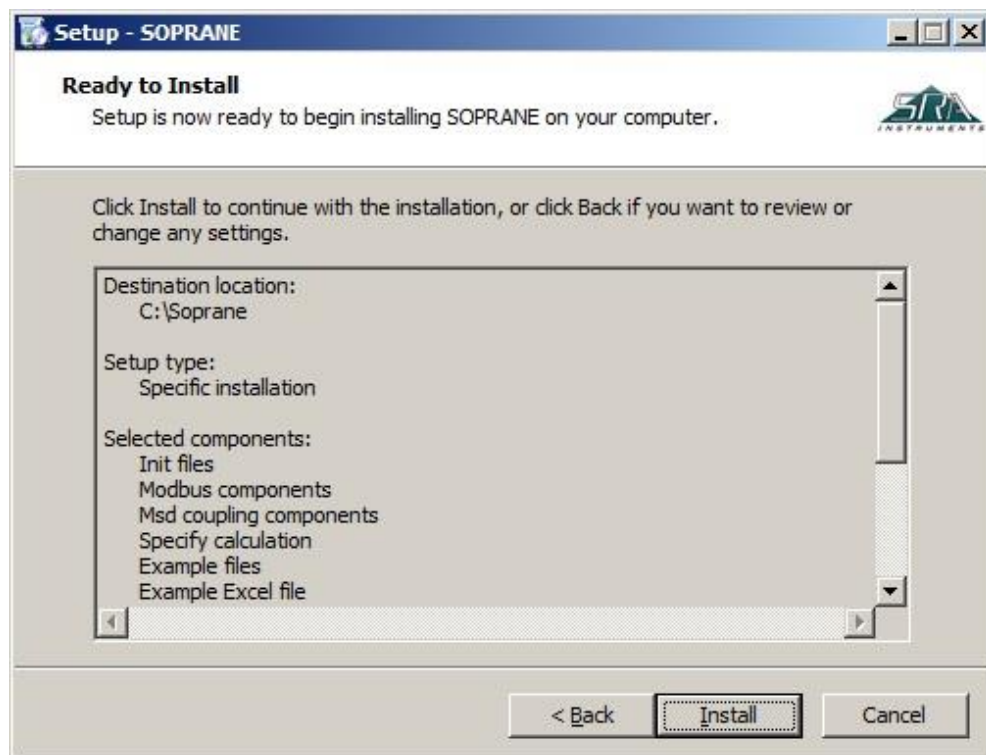
7. Select the Start menu folder where the Soprane's shortcuts will be installed and click on Next.
(Usually SRA Instruments is chosen).



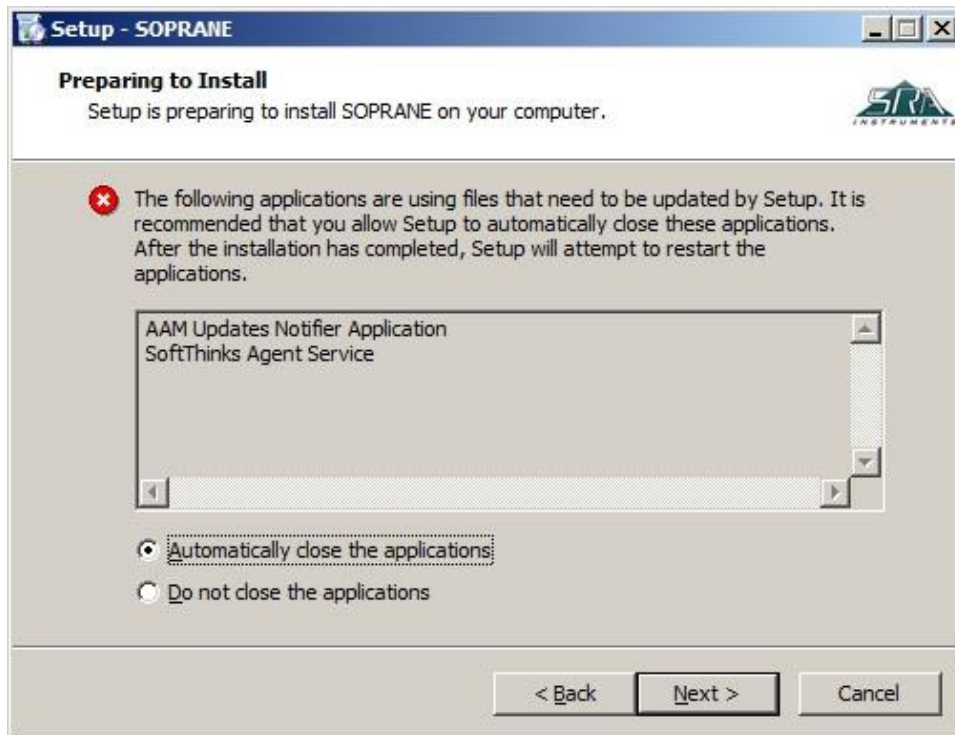
8. Choose if you want to create a shortcut on the desktop or in the quick launch bar and click on Next :



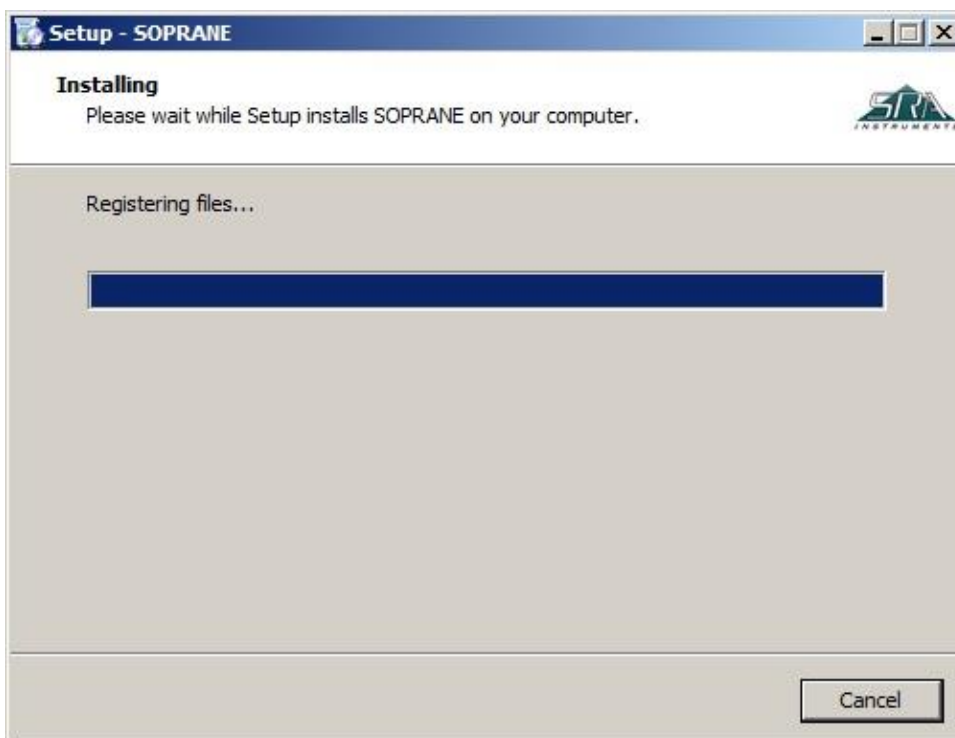
9. In the new window, click on Install :



10. Stop automatically the applications (if possible) and click on Next :



11. Soprane installation is launched :



12. At the end of Soprane installation, select 'Installation of the protection key drivers' and click on Finish :



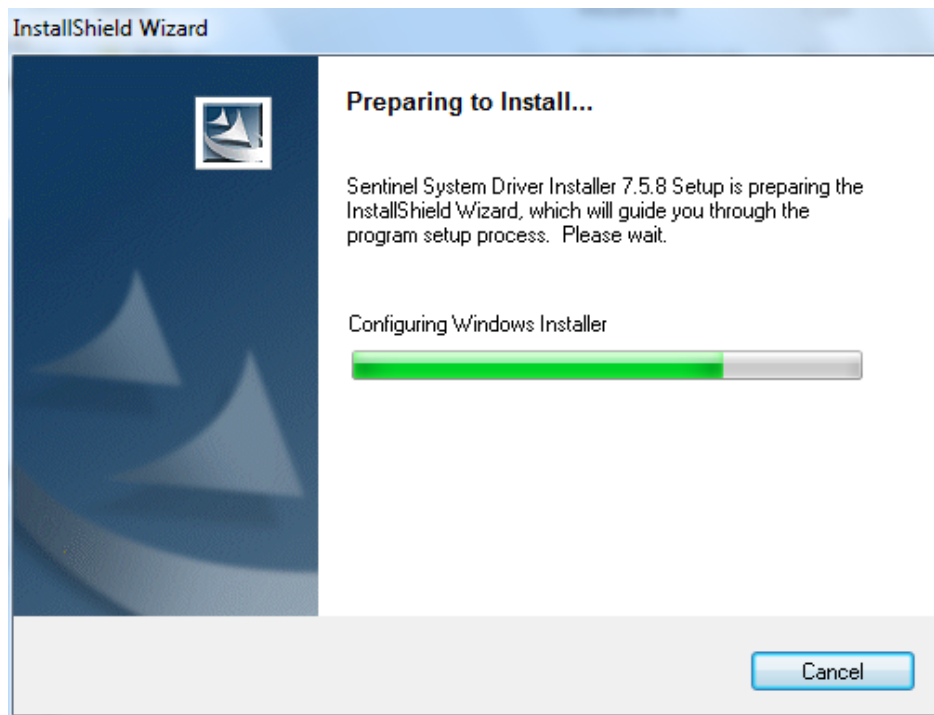
2.2 Drivers installation

The drivers installation is automatically launched after the Soprane installation, excepted if an error message appeared at the end of Soprane installation. In this case:

1. On the key or the CD, look for the file : Soprane/Module/Sentinel System Driver Installer.exe
2. Right click to launch it in administrator mode



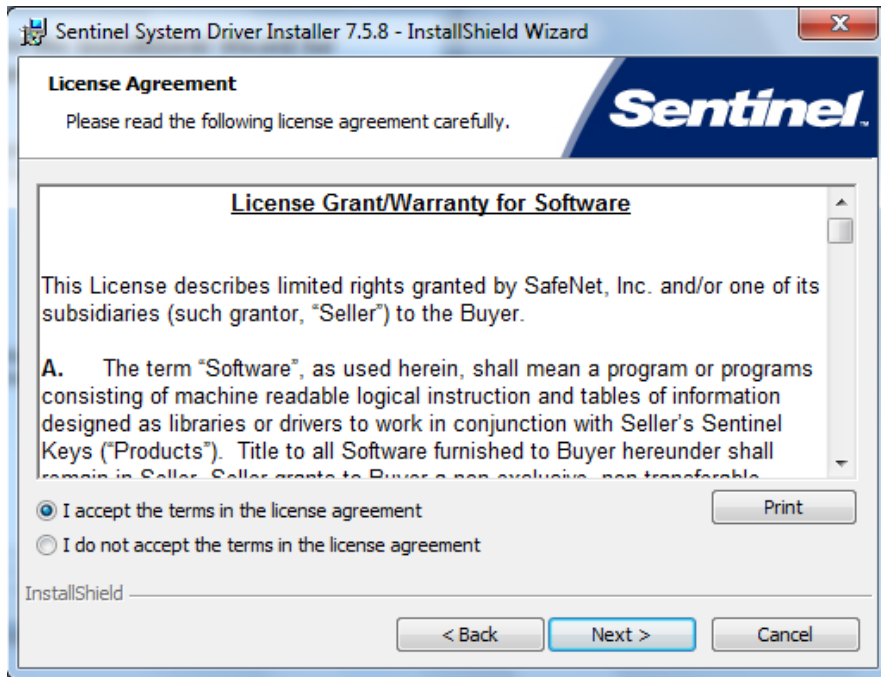
The drivers' installation is automatically launched:



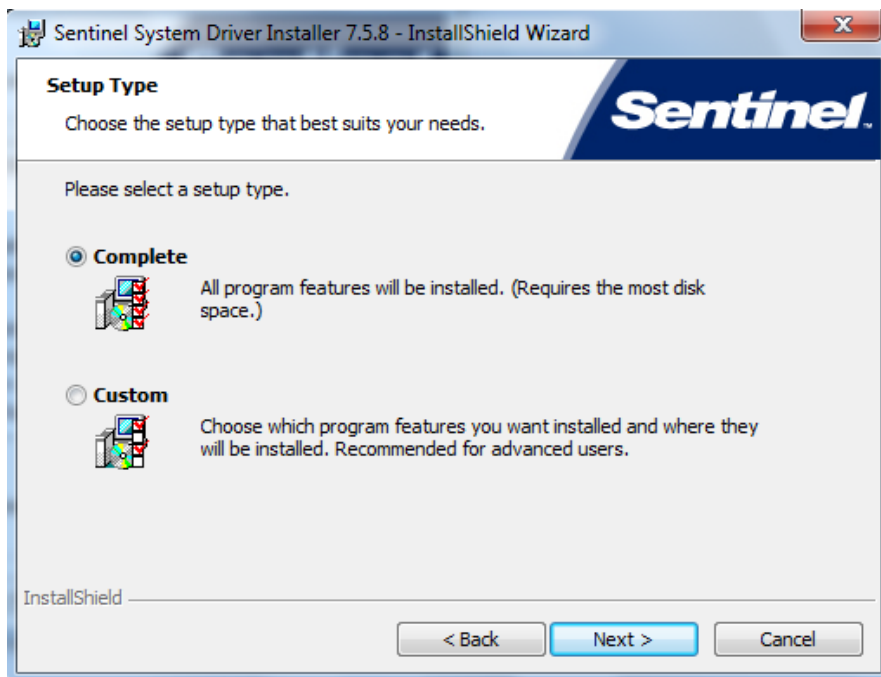
1. In the window displayed, click on Next :



2. Then accept the terms in the license agreement and click on Next :



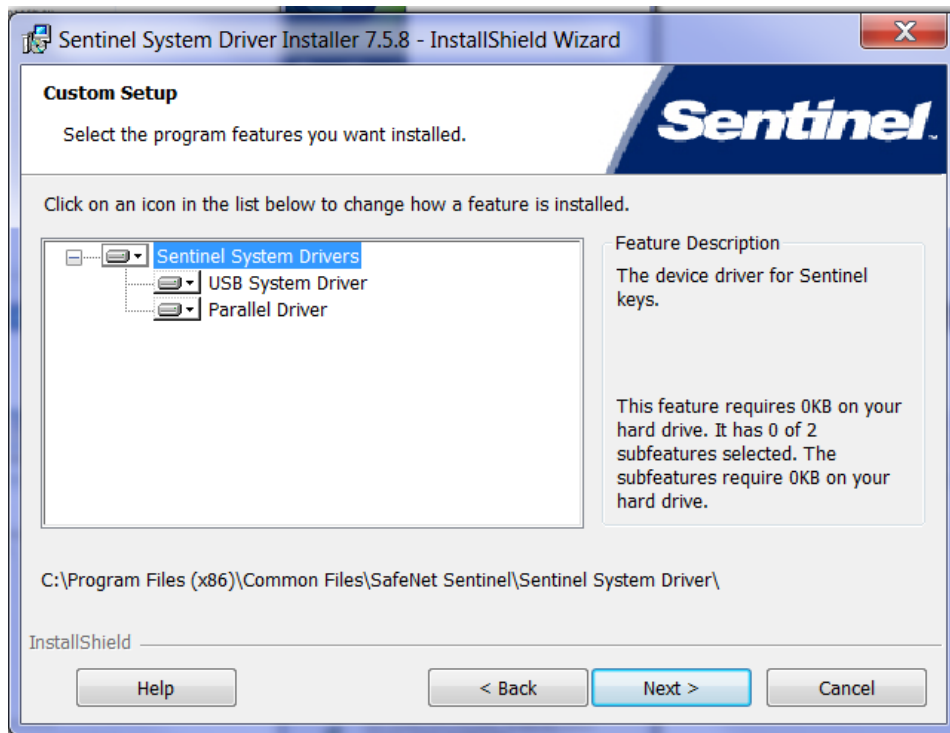
3. In the following window, select 'Complete' and click on Next :



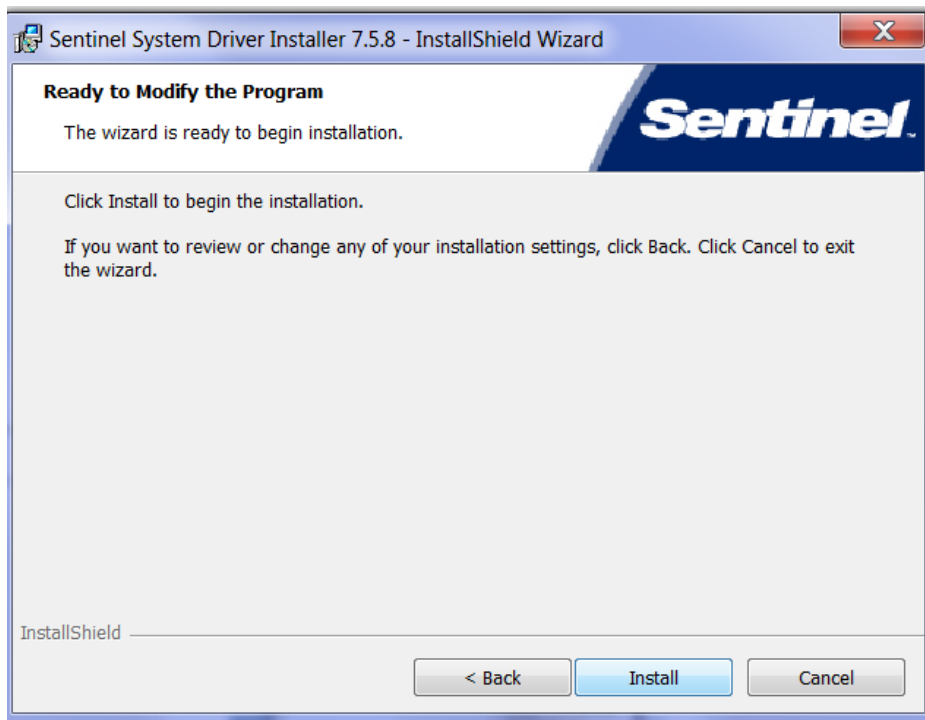
4. In the window “Program maintenance”, select ‘Modify’ and click on Next.
This window doesn’t open if the key drivers have already been installed on the computer.



5. In the following window, select Sentinel System Drivers and click on Next :

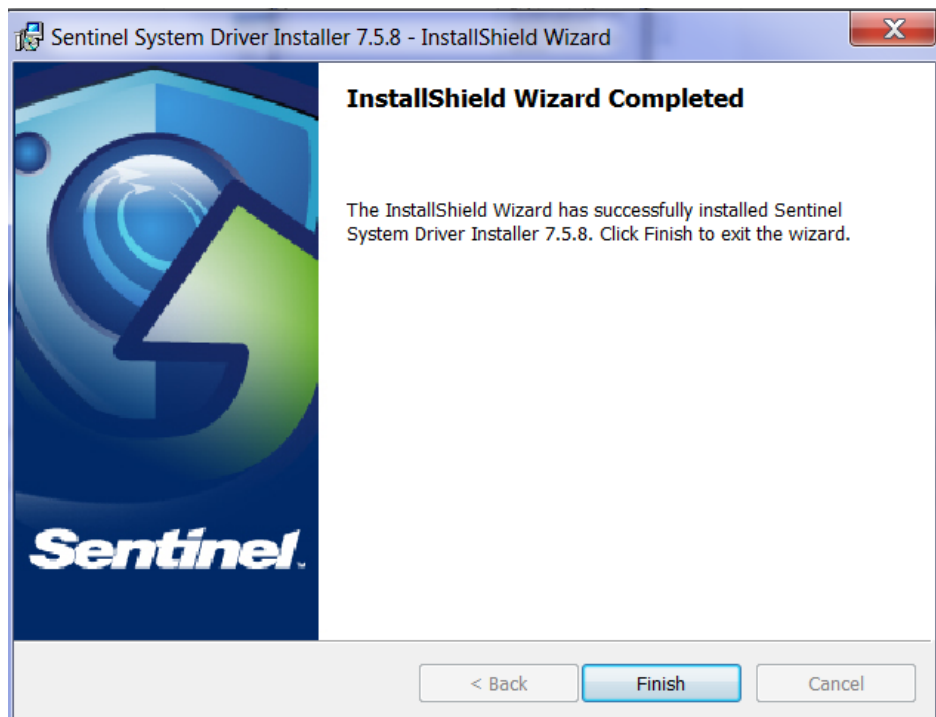


6. In the window displayed, click on Install :



The drivers' installation is launched.

7. To complete the installation, click on Finish :



8. Connect the Soprane key and go to Soprane Set Up.

SRA INSTRUMENTS
210 rue des Sources
69280 Marcy l'Etoile
FRANCE

T : 04.78.44.29.47
F : 04.78.44.29.62
info@sra-instruments.com
www.sra-instruments.com

SA à Directoire et Conseil de
surveillance au capital de 150.000 €
RCS Lyon B 342 068 731
APE 4669B
SIRET: 342 068 731 00054
Code TVA FR 40342068731

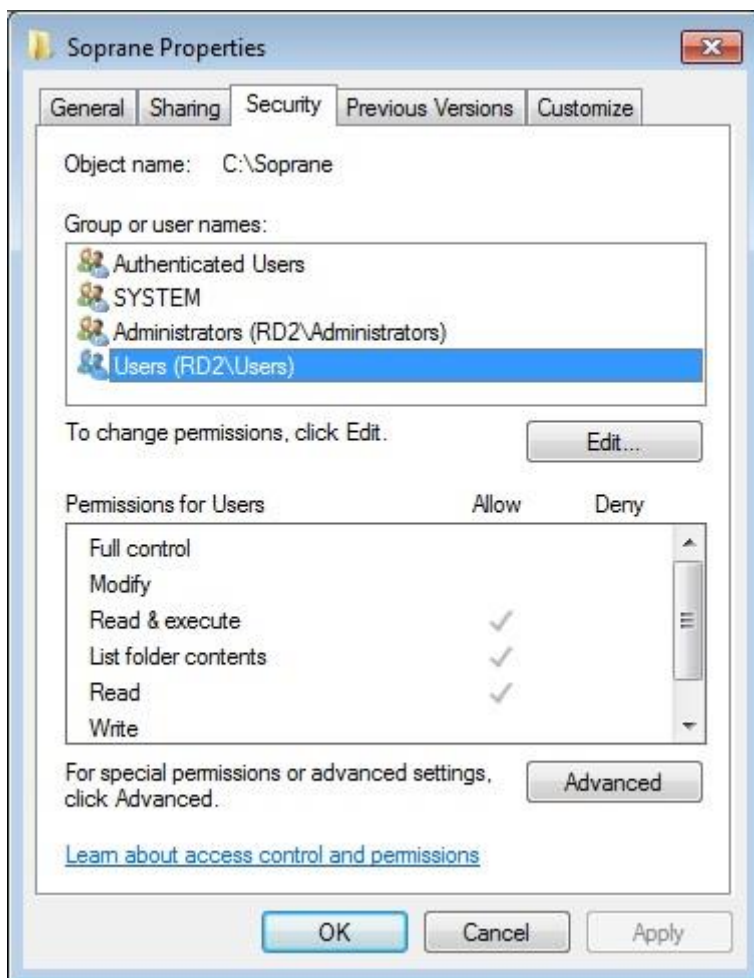


3. Computer configuration for networking

For some uses, it is necessary to modify some directories administrator rights and some registry keys.

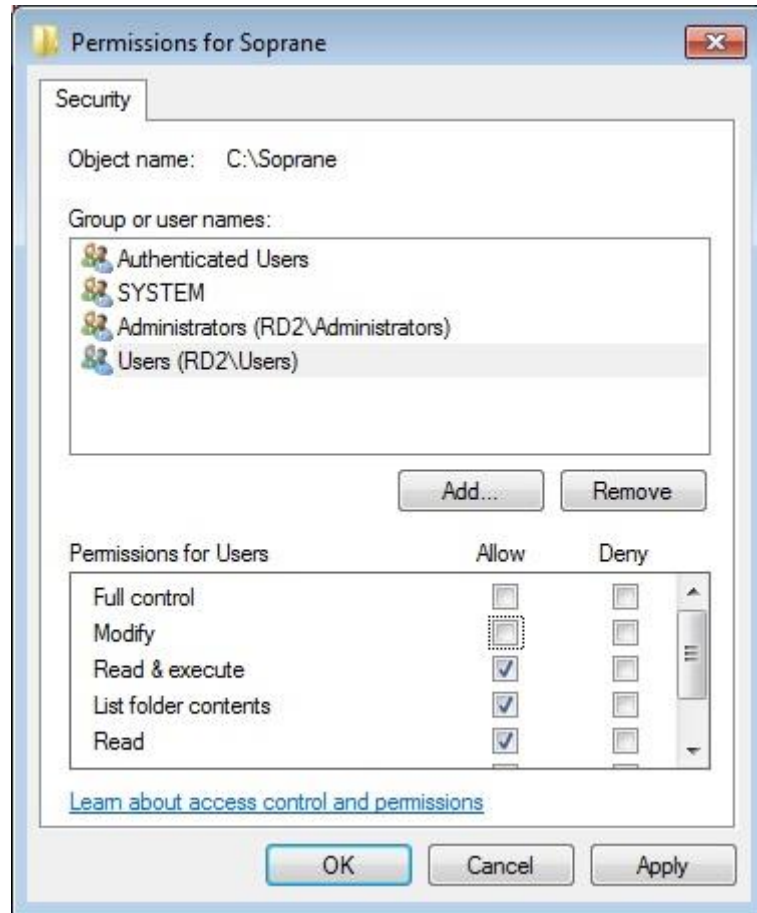
3.1 Administrator authorization on Soprane directory

1. Take administrator rights.
2. Right click on Soprane directory (by default: C:\Soprane) and click on the menu Properties.



3. In the tab Security, select the Users group and click on the button Edit.





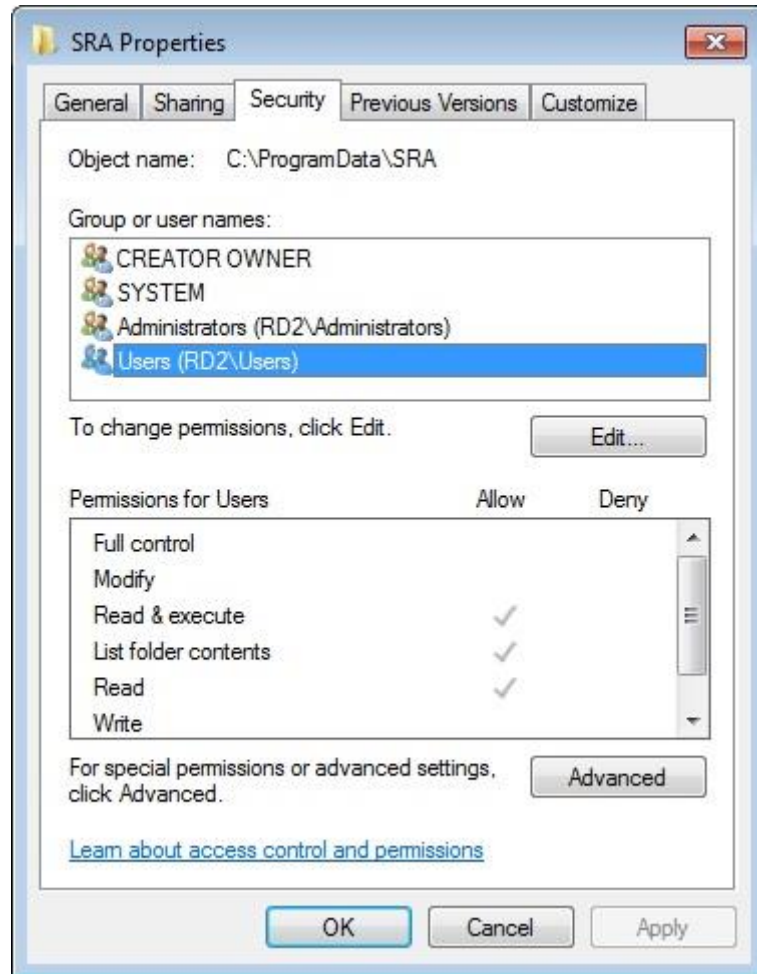
4. Select users.
5. Check the box Full control and validate by clicking on the button Apply.
6. Close the different windows with the button Ok.

3.2 Administrator authorization on the user ProgramData directory

The user 'ProgramData' directory is accessible by the following way:

1. Open the Windows Execute menu.
2. Enter the following data: **%programdata%** and validate by Enter.
3. A Windows Explorer window is opened directly on the right directory.
4. Select the SRA folder and make the same modifications on the Security tab as in the Soprane directory.





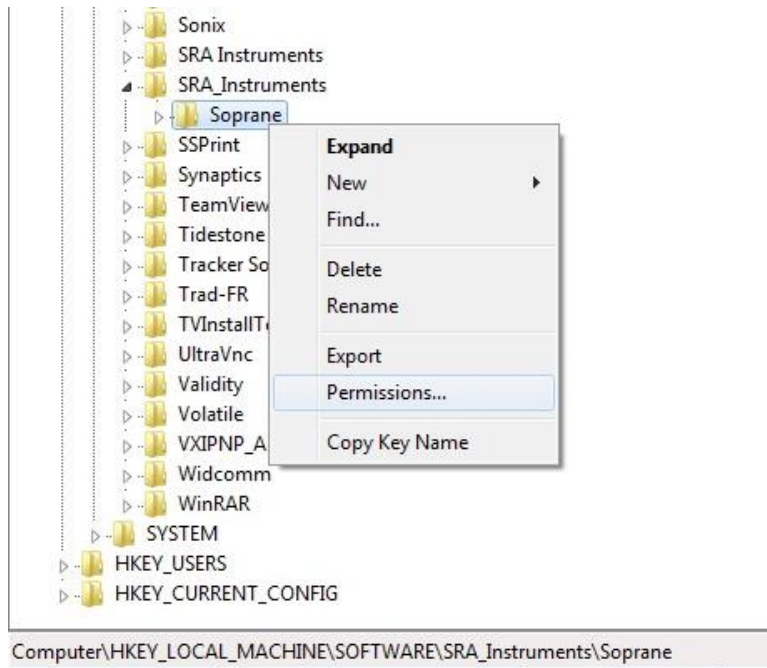
3.3 Administrator authorization on the Soprane registry key

The registry is accessible via the Windows Execute menu. Enter the following information: **Regedit** and validate by Enter.

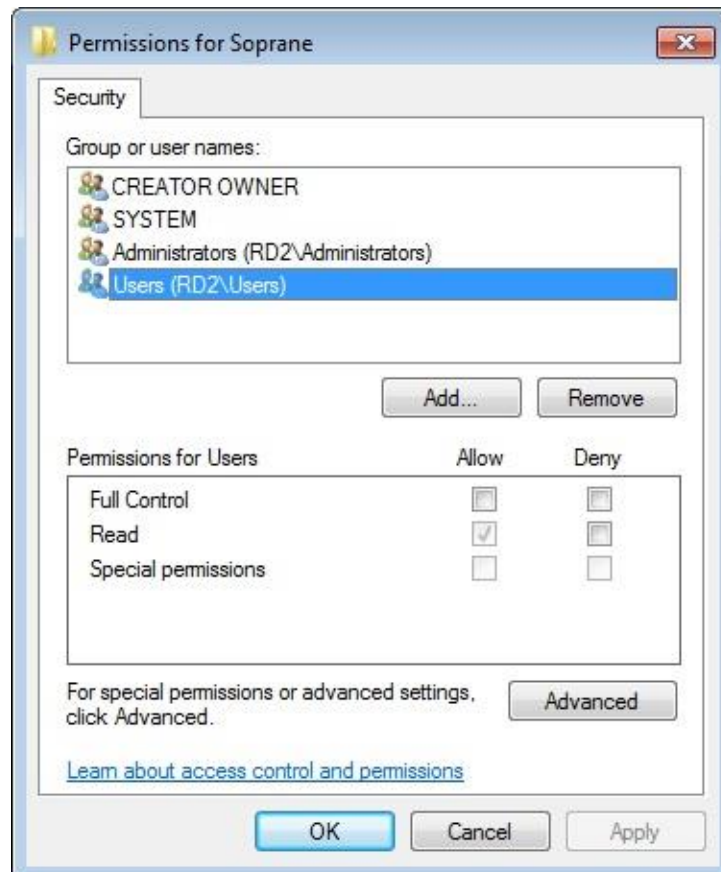
A window opens, displaying the different values of the registry.

1. Reach the folder : **HKEY_LOCAL_MACHINE\SOFTWARE\SRA_Instruments\SOPRANE**, **BE CAREFUL**, in the case of Windows 10 64 bits, it is necessary to select the folder **HKEY_LOCAL_MACHINE\SOFTWARE\WOW6432Node\SRA_Instruments\SOPRANE**
2. Right click on SOPRANE key and select the sub-menu Permissions.





3. As previously, select the Users group.



4. Check the box 'Full Control', click on the button Apply and validate by the button Ok.

5. Close the registry.

